

New Jersey Shore BMW Riders

CLUB NEWS - August - 1998

First Look: 1999 BMW R1100S

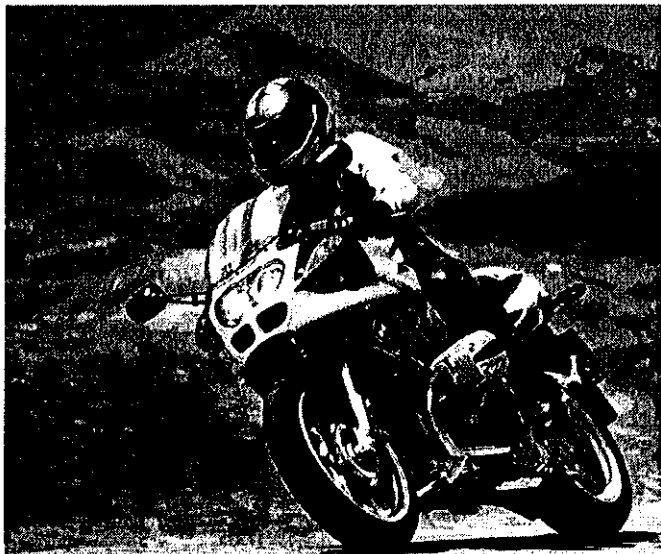
Renewed Aggression

Reprinted Courtesy of Motorcycle Online Staff

Photos Courtesy of BMW AG

LOS ANGELES, July 1998 – BMW offers a wide range of high-quality sport-touring motorcycles. With characteristic attention to detail, top-notch engineering, comfortable ergonomics and the best hardbag system sold – stock or aftermarket – the Boxer-powered R1100RS is one of the finest sport-touring motorcycles made. However, the RS puts a greater emphasis on touring, and as a result it's considered a bit "porky" for aggressive sport riding. In addition, an even narrower niche in the increasingly segmented motorcycle marketplace has recently developed.

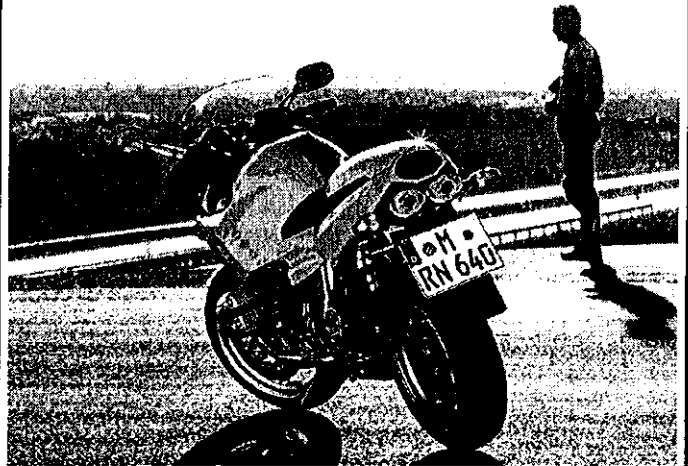
Ducati's ST2 Sport Turismo and Buell's S3T are what might be considered touring-sports: sport-touring motorcycles that emphasize performance and sport-riding characteristics.



In September, BMW will enter the burgeoning "touring-sport" market with the R1100S, the first Boxer model to carry the "S" designation since the R100S and R90S, the later which Reg Pridmore rode to the AMA's first and BMW's only Superbike Championship.

While the R1100S is not a superbike, it is clearly designed with Ducati's ST2, Buell's S3 and even Honda's

VFR800 in mind. At the heart of the R1100S is a tweaked engine and exhaust system that BMW claims produces 98 ponies at the crank, an almost 10 percent increase over the RS. BMW claims only one ft-lb increase in torque, so it looks as though most of the power increase is found at the top end.



Other major improvements include a six-speed gearbox – the first ever for a Boxer engine – and a new main frame that allows the Paralever swingarm to mount not on the gearbox, as it does on all other Boxer models, but directly to the main frame, providing for a stiffer, more stable ride.

Exhaust pipes run underneath the seat providing for what is perhaps the sexiest rear end this side of Jennifer Lopez.

Continued next page..

President's Corner

Newbies

A couple of my Sunday rides have been in the company of new club members. This is the best way to get to know folks.

My choice, as usual, was to start at Miels Cafe, Stockton, and travel north on the 3-digit county roads. The first group was me, Erik Miner, and Mike [from Cranbury].

Erik suggested we call Blackman's, Emmaus, PA our first destination. That was OK for me, I'm always willing to see a new shop. It's a vast place selling just about every-

Continued on page 3..

MEETING - August 12th, 7PM, Bedrock Cafe!

First Look: 1999 BMW R1100S **Continued**

Other redesigned elements include a lighter Telelever front end that may be hand adjusted (via a large knob found between the fork bridge and the fuel tank) while the rider is in motion. On the RS this adjustment is via a slotted bolt on the spring strut itself.



Also, the R1100S sports lighter aluminum wheels, a slimmer but non-adjustable seat (all other R bikes offer adjustable seat height), a rear seat cowl, footpegs set higher and farther back, a carbon-fiber front fender and a new, unique-looking, ellipsoid headlight that BMW claims provides better low-beam illumination.

All this makes the R1100S, according to BMW, the lightest Boxer ever. The press release from BMW AG claims that the S weighs 505 pounds in "ready-to-go road trim."

However, we are not sure if this means dry or wet weight, since the R1100RS is claimed to weigh 506 pounds dry, and a one-pound difference isn't too significant. But BMW claims that the RS weighs 542 pounds wet (we measured the '98 RS with a full tank of gas at 580 lbs), and a 37-pound weight reduction is something about which to alert the media.

What this does mean is that we'll have to weigh and test the R1100S as soon as they become available. With new Buells rumored to be coming out this year it looks as though our hands are tied and we'll have to endure another Twin Touring Sport Shootout and yet one more hard, boring ride up the coast to Monterey. Damn! Work, work, work ... (see other R11S article on Page 4)

Udder Nonsense Rally - 4th of July weekend, Cairo/RoundTop NY

The Fourth of July weekend was just fine for a trip to Cairo (N.Y.) and the annual gathering of the herd of "Gummikuh Fahrer" type people. Arbeitsgangers Eilenberger, Kwiatkowski, Martin and Hickman won applause for the most mileage accumulated in New Jersey on the way to Cairo - Prez Martin set a record for the most time on the road and the shortest time at the rally - a round tripper in one day!

The event was well-attended as evidenced by the tent count on the golf course driving range and the remains of the brautwurst, roast beast and beer cups.

The music on Friday was by Ernie Williams blues band, but Ernie wasn't present due to a sick brother. Still good, though.

The Saturday evening music was by a nice group but Shirley and I can't remember their names or sounds after a jug of cheap red wine and early to bed.

The unofficial attendance count of NJSBMW Riders was in the neighborhood of eight - or was it nine?

Most attendees will agree that they shared a very special moment when Jose dela Cruz made an unobtrusive appearance after his dreadful cycle accident last year. He was very gracious and generous in his praise for the contribution our rally made to him. Also got a chance to hug and kiss him.

If you are looking for a fine time, beautiful ride, good food and music and lots of neat motorcyclists from all over, consider attending next Fourth of July. (From the Polish correspondent, Knarf Ikselkrik - tcakirk@aol.com from ground control in Pine Beach)

Attending were:

Don Eilenberger
George Hickman
Frank and Shirley Kirklewski (your reporter and club coordinator for this event)
Stefan Kwiatkowski
Julia Shirley
Bill and Peg Mara
and for some reason - Guzzi-Guy (normally a member of North Jersey) was signed up under our club..

President's Corner, continued from Pg 1..

thing (except H-D). There was a poker run going on, too, so there were lots of friendly folks to chat with.

While waiting for Erik's K12RS to get a new rear "sneaker", I was talked into a brief test ride on a Ducati ST2. You've head of this one. It's the first Duc with factory luggage, in the sport-touring mode. It was nice enough, and priced well, but I told the sales guy, I'm waiting to try the BMW R11S. That'll be available with bags, too.

Mike and I left Erik there to try to sort through tire balancing problems, and we went on to Stan's Cycle shop in Doylestown, PA. Stan is the one who restarted BMW's competition record in the US after WW2 by flat track racing 'em against Indians and H-D's. It must have confused the heck out of the spectators back then to see a Boxer motor flyin' sideways on the dirt.

A visit to Cross Country BMW, Metuchen, made it a three dealer day. Mike had to pick up a special order part there. Mike is a very serious rider, and I recommend riding with him if you enjoy a fast pace.

Don E., new-member John Walsh, and I took another Sunday spin in the same area, and ended up at Dilly's Grill, across from Stockton.

It was the usual summer Sunday bike & burger crowd, with cruisers in the majority. But a funny thing happened.

We noticed a sweet young lady admiring our parked Beemers. She lavished attention on these painted mounts, amid a sea of chrome and straight pipes.

When we approached to prepare to leave, she had earnest questions about which model might be best for HER to ride. She had arrived on an Asian sport standard, with a friend, and want "something different". Her parents raised her well.

Looking around, she said frowning, "Everyone rides a Harley."

Then, an intelligent young man in my office who formerly rode dirt bikes, quizzed me about what type of street bike he should look at.

I told him, if he's serious, why not move up to a Beemer? Even a used one would be a good choice. He just called to let me know that he test road a new F650. He was impressed.

I think we'll have a couple of new member to go Sunday ridin' with real soon.

Prez Glenn

Trip to Missoula, Montana BMW National Rally

or

**"Hitting yourself on the head
with a Hammer 'cause it feels so
good when you stop."**

Night Before Christmas Syndrome

July 2nd, intermittent sleep. Rise early and leave home at 5:30AM to meet Grant Duncan and start the trip to Montana. The odometer on my 1996 R1100GS reads 6,764 miles. After last minute packing and a restless night, we meet and depart. We will head north toward interstate 80 and then west through Pennsylvania. Stop for gas and food and into Ohio. We stop at 7:30PM in Perrysville, Ohio outside Toledo. Milage is 7,391 for a total of 627 miles. Evening ride after dinner with no helmets! An experience!

Chicago Traffic and Wisconsin Rain

July 3rd, Up early and on the way. Still on interstat 80, then on to Chicago (a nightmare of heat and traffic) and then into rain. Naturally our expensive gor-tex suits are packed away. After a thorough soaking we put them on and head into Madison WI. Getting dark and rainy, so we put up at Best Western Motel. 7,843 miles for 432 total. It rains all evening, so a planned excursion into downtown Madison is cancelled.



The Highways Get Much Better

July 4th. Up and out for an early start. The rain has stopped. We are out and across Wisconsin and Minnesota (nice states and good highways after the traffic and toll roads of Indiana and Illinois.) We stop at the "Family Fun" campground outside Mitchell, South Dakota with 8,816 miles or 570 total for the day. We go out for beers, and visit the "Corn Palace" and watch fireworks set by kids at the campground. -

Good day!

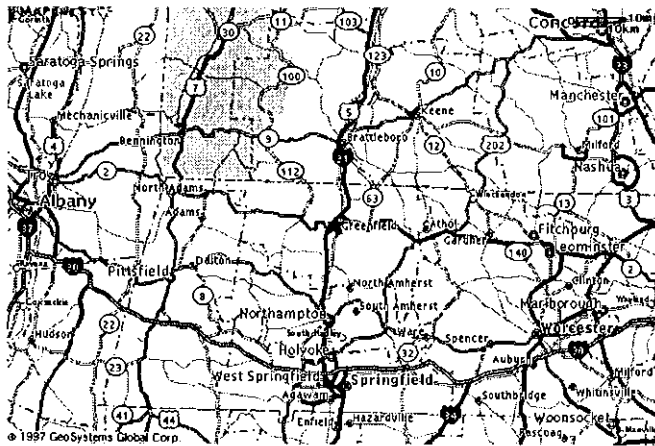
Continued on next page..



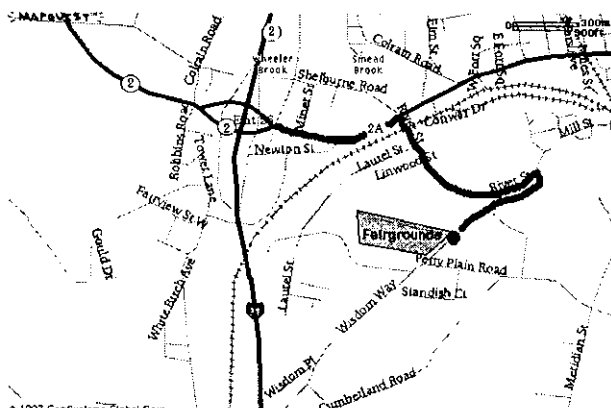
Directions to the RA Rally:

Local directions:

At the Franklin County Fairgrounds, Wisdom Way, Greenfield, MA, Exit 26 off Interstate 91 at the junction of route 2A in Greenfield, Mass. Take east exit from rotary towards Greenfield on 2A (watch for sign). At second traffic light, River Street, turn right (before river). Proceed to Wisdom Way (on your right, before river) and turn right up the hill. The entrance to the fairgrounds is at the crest of the hill.



Exit 26 of Interstate 91 is the intersection of 191, 2 and 2a at Greenfield, Mass.



© 1997 GeoSystems Global Corp

Legend

● Entrance to fairgrounds
 — Route from rotary
 Take east exit from rotary at exit 26 of 191/2 towards Greenfield. Turn right at second traffic light onto River Street. Proceed along River Street (ignoring Fairgrounds sign) and turn right onto Wisdom Way (on right, before river). The fairgrounds entrance is at the crest of the hill

Trip to Missoula, Montana BMW National Rally (Continued)



☐ Fireworks at Rushmore

July 5th. Break camp and head into an overcast day. We stop at the famous "Wall Drugs", have buffalo burgers across the street. We ride through the Badlands for spectacular scenery and great "Twistics" for motorcycles. Stop outside Rapid City, South Dakota with 8,816 miles or 403 for the day. Dinner in Rapid City at the Firehouse Brewery, then on to Mt. Rushmore for the 1st fireworks display in 60 years. A spectacular show, with the faces illuminated and fireworks overhead for an estimated 26,000 people.

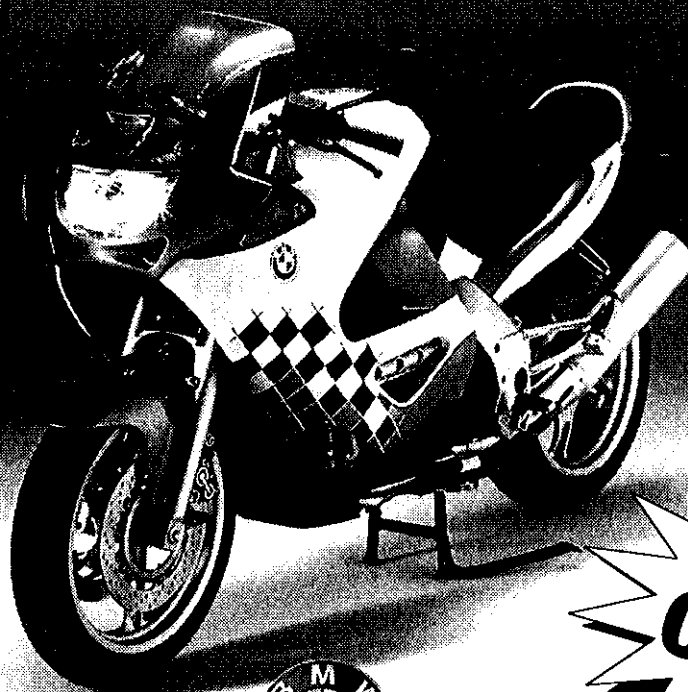
Continued on next page..



**Club Picnic, if you weren't there
 you're not cool!**

THE
last-one-~~across~~-~~the~~-country-is-a-rotten-egg
TO CROSS
K1200RS

ALL MOD
STOCK
IMMED
DELIV



**NOW
OPEN**



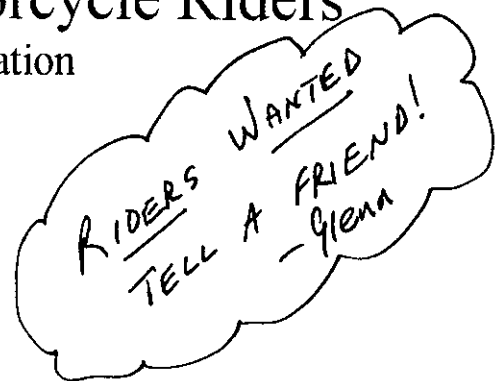
CROSS COUNTRY

BMW

875 MIDDLESEX AVENUE/RTE 27 • METUCHEN NJ
732.635.0094

New Jersey Shore BMW Motorcycle Riders

Membership/Renewal Application



Name: _____

Address: _____

City: _____ ST: _____ ZIP: _____ - _____

Home Phone: (____) _____

Work Phone: (____) _____

FAX: (____) _____

E-Mail Address: _____

Bike(s): Year _____ Model _____
 Year _____ Model _____
 Year _____ Model _____

BMW-MOA Member? Yes [] No []

If yes - membership number: _____

If not, do you want an application? Yes [] No []

BMW-RA Member? Yes [] No []

If yes - membership number: _____

If not, do you want an application? Yes [] No []

Our club has a listing of people who are willing to go for a ride on short notice. We call this our "Sunday Ride List" since it is frequently used on nice Sundays. If you are on the list - you can expect to be called by other members who are looking for company for in impromptu ride. This last summer, the Sunday Ride list resulted in over 10 impromptu rides - both on Sundays and on other days of the week, so:

Would you like to be on our Sunday Rides List? Yes [] No []

I'm interested in: Rally's [] Touring [] Tech Sessions [] Other _____

I'm willing to help out with: _____

By signing this application, you accept full responsibility for any injuries you or any guests may incur during a NJS-BMW-Riders club activity. You accept that motorcycling is inherently dangerous, and that the club officers and members are not expected to accept any liability for injuries suffered by you or any guest you invite to an activity!

I've read the above paragraph and agree to hold harmless all members and officers of NJS-BMW-Riders Yes [] No []

Date: _____

Signed: _____

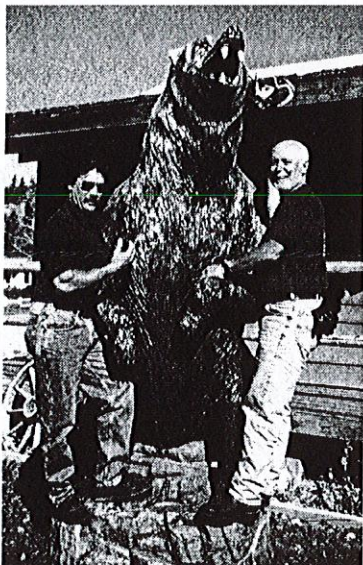
Please forward this application with a check for \$10 made out to our Secretary Don Eilenberger to (dues may be pro-rated on a quarterly basis, they are due on November 1st of each year):

NJS-BMW-R c/o D. Eilenberger
1213 Pond Rd
Spring Lk Hts, NJ 07762

Trip to Missoula, Montana BMW National Rally (Continued)

The Great West

July 6th. Head for Wyoming and have spectacular riding through South Dakota and Wyoming. Highlight if from Buffalo Wyoming to Worland Wyoming on Rt 16 through Ten Sleep and the Powder River Pass at 9,666 feet. Snow capped mountains all along the horizon. We also stopped again at Mt. Rushmore and Deadwood Wyoming, but bypass Sturgis, because we were told there wasn't anything worth while there. Big Horn National Park - really beautiful. Spearfish Canyon - spectacular, but watch out for the tar filled expansion cracks. We stop at Greybull Wyoming KOA with 9,250 miles, or 444 total for the day. Dinner at Lisa's Resturant in Greybull, "The Mosquito Capitol of the World." Setting up and taking down camp was an experience. Grant turned grey and was dizzy from loss of blood.



Missing Bambi

July 6th. After breakfast with another BMW rider we are on our way. Out of Greybull toward Cody and the Chief Joseph Scenic byway, Route 296 and more beauty. Onto Belfry and Red Lodge and into the Northeast entrance to Yellowstone National Park. Yellowstone is beautiful but at \$15 - overpriced. It's filled with traffic, gawking tourists, bad roads, construction delays and really not much fun. We don't stay. Exiting at the western exit, we head for Montana and stop at Virginia City. Outside Virginia City, I rounded a curve and headed downhill where two fawns were crossing. I couldn't stop so went between them. Grant says I appeared to hit one, but I didn't feel it and there were no marks on my bike.

In any event, one went down, got up, saw Grant bearing down and ran into a pickup truck coming the other way.

(Grant's note: "Two innocent fawns were trotting across the highway when Dennis decided to thread the needle. Yes - the second one ran under the wheels trying to stop. Well, along came myself and the poor little guy want to go back to where he started, but confused - the scrambling Bambi was struck by oncoming traffic. The little legs were no more. Thanks Dennis" (*Editors note - only good deer is a dead deer. THANKS Dennis!!*) Anyway, Virginia city, Montana at 9,597 miles or 329 for the day. It's a nicely, partially restored mining town, a real scene out of the "Old West." Spectacular sunset. Rain during the night, but clear in the morning.

Final Leg

July 8th. Heading towards Missoula. The highlights are the "Big Hole Crossing", Beaverhead Forest and the bitterroot National Forest for great curves, sweeps, crossbacks, scenic vistas and off-and-on rain. We arrive at Missoula and sign in at the rally. Grant makes a great entrance by dropping his motorcycle. It's 9,843 miles, or 3,079 since we left New Jersey.

Missoula Interlude

July 8th. Through July 12th we stay at Grant's sister's house. Jean is a good host and makes our stay very nice. We visit the rally and tour the exhibits. Grant buys a new seat (Corbin) and I buy a sheepskin cover for my seat. You can understand why! We enjoy the brew pubs, resturants and shops of Missoula and spend some fair amount of time at the "Stockman's Bar."

Leaving Beautiful Montana

July 12th. Sunday morning, bright and clear at 53F, we head out for Glacier National Park and Canada. The ride is great along Route 93 and Flathead Lake and through the park. More spectacular scenery. We stop at SwiftCurrent, Saskatchewan with 10,611 miles or 551 total.

Endless Prairie

July 13th. Depart across endless prairies, green, few trees, and lots of cattle. The road is straight as far as the eye can see. It's very windy. At Moosimem, Grant's tire is going flat, but he manages to patch it and it holds! At 8PM we stop at a low-end motel near the Manitoba, Ontario border.

July 14th. Into Ontario along the north shore of Lake Superior, pass Thunder Bay and head towards Sault St. Marie. We stop about 10PM, with 12,038 miles, or 812 total for the day. Rather tired!

July 15th. Head out early in the morning and decide to head for ferry to cut out some miles. Ontario goes on forever and it's not pleasant riding. Lots of traffic and hot.

July 16th. Into the United States and home. A total of 13,024 miles, or 6,260 for the total. Glad to be home, but what a great trip!

Dennis Swanson!

Meeting, Weds, August 12th, 7PM, Eat and Meet!
Bedrock Cafe, Rt 71 (Main Street), Bradley Beach, NJ

Hot Stuff!

Upcoming events

August 27-30, BMW-RA Berkshire Mountain Weekend, Greenfield, MA. For those of you who missed Montana, or who didn't make Fontana last year - the BMW Riders Association is running a national rally right in our backyard (almost)! This promises to be a great rally - in a great riding area. Less than 20 miles from the Vermont border (and RT 100), the Berkshire mountains are one of the great undiscovered riding venues on the east coast.

Don E is possibly planning (given enough vacation time) a two day ramble on back roads to the rally site, going through the NY's Catskills and lower Adirondacks then east into MA. If you're interested - contact Don (732-449-1533). Glenn Martin and companions will be taking the 'blitz' route to the rally, doing it in one day. Interested? Contact Glenn (732-583-3945).

Whatever your riding style - backroad rambles or hiway blitz - we've got a group doing it. See the application form inside this issue for more details on the rally!

Sept 25-27, New Sweden's Last Chance Rally. A great one by a local club we're good friends with. It's a regular one for several members. Contact Don Eilenberger for details!

Got hot stuff? Send news, rumors, spy photos, stories and tall tales to Secty Don!

FOR SALE/TRADE/WANTED!

1996 BMW MOTORCYCLE R1100RT 1400miles still under warranty, all extras. Glacier Green, excellent condition, \$12,500

609-654-6753 or WMANCINELLI@hccanet.com

1975 BMW R75/6 vintage motorcycle.

Black, NEW Metzler tires, NEW battery. Well maintained, garaged. Perfect Condition. \$2900 \$2500.00 OBO.

Contact Alan Thomas. Home (609-361-0231), Work (732-269-0442), Pager (800-861-0687)

Two BMW System II helmets. One size 60-61 (large) and one size 62-63 (jumbo). Available also with one heated shield and cord. Price negotiable.

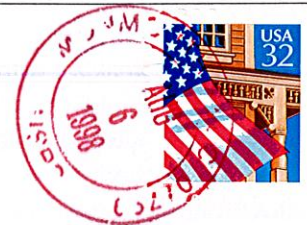
Call Don Eilenberger 732-449-1533

Note - this space is for you to use! Send your For Sale/Trade/Wanted listing to Don Eilenberger. Preferably by EMail (deilenberger@monmouth.com) or via US Mail (printed or typed please!) **There is NO charge for running an ad here!**



NJ-Shore BMW Riders

C/O Don Eilenberger
1213 Pond Rd
Spring Lk Hts, NJ 07762



Dues OK until 11/01/1998

Klaus Huenecke

POB 40

Tennent NJ 07763-0000