

# THE NEW JERSEY SHORE BMW RIDERS

<http://www.njsbmwr.org>

o c t o b e r 2 0 0 0



## Notes from President Dennis

There are lots of things coming up in the next few months that we will be discussing at our next meeting. The nominating committee will be presenting a slate of officers for 2001 and elections will be held at our November meeting. We will finalize plans for our annual holiday party and awards celebration to be held in December. And we will soon be considering our rally next year.

The September tech session was a success and many thanks to Dan Notte who provided the site and the refreshments and to Glenn Martin who organized the event. Sherm Cooper provided a slide show of his Costa Rica tours and a really interesting slide show of his trans-Africa trip. Court Fisher gave an informative talk on all of the riding opportunities throughout the world. And then it was just a good chance to get together and talk about motorcycling and motorcycles.

Don Eilenberger, Jim Hoehl, and I made the New Sweden Club's Last Chance Rally the September 30th weekend. It was a good time and the members worked hard to insure a successful event. Many of our members were in attendance. This was followed on the return trip by a visit to the vintage air, auto, and motorcycle show at the Robbinsville Airport. Many of our club members were also on hand to watch the world's only auto-gyro take off, fly around and land. The event is free and if you missed it, you might mark your calendar for next year.

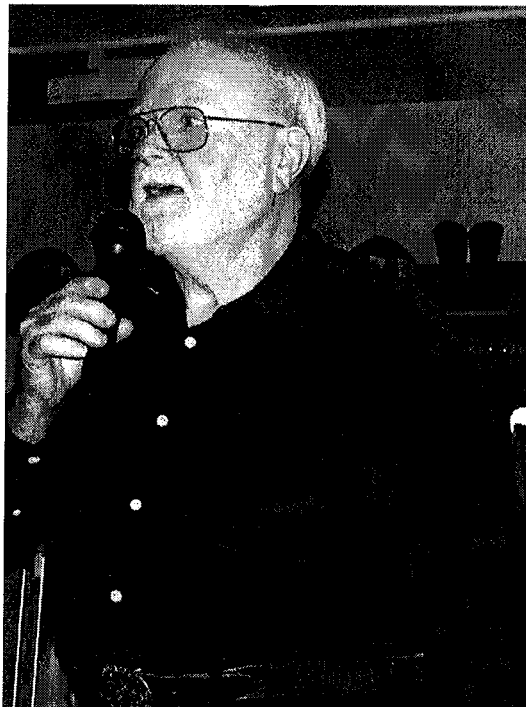
So why not come out to Schneider's for a great meal or snack October 11th? It's a good chance to meet your friends and swap stories and to share in the planning of your club's events!

-- R. D. Swanson ([ardeeswan@aol.com](mailto:ardeeswan@aol.com))  
Point Pleasant Beach, NJ

**Wanted!!! News Letter Editor** for this publication. We've got 100+ members now. There must be *someone* out there who wants the power, prestige, & fun guaranteed every month with this position. If you're interested, please e-mail me, Glenn, at [Gmartin928@aol.com](mailto:Gmartin928@aol.com) --Editor

## Cross Country BMW Hosts World Travel Open House Night.

Sherm Cooper (below) and BMW MOA Ambassador Court Fisher spoke to 40+ folks about winter riding opportunities in warmer global climates. Dan & Lois are planning more O.H. events as you are reading this. Join 'em for the next one.



Sherm Cooper at the Cross Country Open House speaking about Moto Costa Rica. Contact him at [www.motoscostarica.com](http://www.motoscostarica.com) for info about the Beaches, Volcano, and Cloud Forest Tour, & the Fantastic 2001 Dual Sport Tour

## 2000 World Championship Punkin' Chunkin' November 4th & 5th

What is Punkin' Chunkin'?

"That's where the big boys get to play with their toys."

"It's the only time of the year when punkins can fly!!"

"The international challenge has been made... we challenge everybody - top, bottom, and both sides."

Every year at punkin harvest time, chunkin teams bring their machines to Sussex County, in Delaware, to compete for the farthest distance in hurling fresh pumpkins through the air. The team that logs in the greatest distance wins the bragging rights, a Punkin Chunkin winners hat, and the display rights to a **BIG ASS TROPHY**.

The trophy was carved in 1995 by a local carver. "The Little Man" image was inspired by the local chunkers who literally carried the biggest punkins over their heads at the end of the first competition back in 1986.

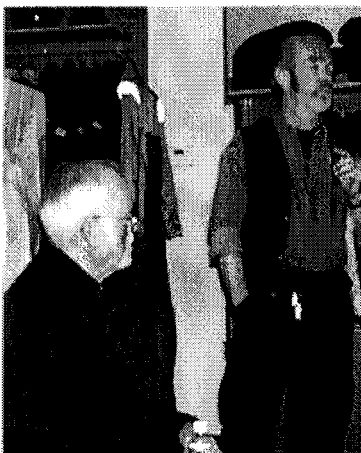
Being the world's punkin chunkin champion is the biggest burden the winners must carry... it's easy to win the championship - but it's harder than hell to keep it!

1999 World Champions from New Jersey, have the ultimate responsibility of safekeeping the Big Ass Trophy. (Team Captain is King Ralph Eschborn). The current record is 3,694 feet.

World Championship Punkin Chunkin Rules

1. Pumpkins Must Weigh Between 8-10 Pounds
2. Pumpkins Must Leave the Machine Intact
3. No Part of the Machine Shall Cross the Starting Line
4. Absolutely No Explosives Are Allowed!

See: [www.punkinchunkin.com](http://www.punkinchunkin.com)



Court & Sherm at CCBMW

## Eeek!! A Bear!!



The **Polar Bear Club** consists of 400-500 motorcyclists from all over the NJ, NY, PA, and DE area who each individually ride to a designated destination each Sunday. Points are awarded for each ride. When you reach the destination, sign-in and write down how many round-trip miles were traveled to get there. Then there is usually a restaurant at the site or nearby where small groups will congregate. There are no planned routes or group rides to get to the destination. The sign-in is usually between 12:00 & 2:00 unless otherwise posted. There are no planned rides after the sign-in. The Polar Bears represent many individual clubs and all come together to ride during the winter under the Polar Bear banner. Checkout the Rules section on the website:

<http://members.aol.com/wfksoft/njpolar/bears.htm> and look at the Pictures section to see what's going on at the destinations.

The Polar Bear Club membership is divided into two groups, Flight "A" led by Richard Doell and Bruce Griffing and Flight "B" led by Richard Leyh and Dave Cushing. These men are your FLIGHT LEADERS and are available to answer any questions you may have. 20 Sunday rides are scheduled to the various designated check points throughout the 4-state area. See the Schedule section on the website for a description of the rides. Rides start October 29, 2000 (opening day at the Cape May V.F.W.) and run through March 25, 2001. The annual KICK-OFF "SOUTH POLE PARTY" is scheduled for Saturday and Sunday, November 4-5 at Fisherman's Wharf in Lewes, DE. The annual year end "NORTH POLE PARTY" and dinner will be held in April 2001 at the "Knights of Columbus Hall" in Old Bridge, New Jersey. The closing dinner is FREE for

## NJ Shore BMW Riders

those members who qualify by earning 30 points (see Rules). Those who have not earned their points or guests who wish to attend the dinner may do so by purchasing tickets in advance.

Bob Hartpence, Chairman  
bear2@k2nesoft.com  
609-894-2941

## INTERMOT 2000

From BMW-RA OTL Intelligence  
<http://www.bmwra.org/otlintel.htm>

The new BMW Roadster. It looks very nice indeed (look to the MC Online for a shot soon) but do notice that it does have six gears but NO overdrive. This is likely to be BMW's quickest twisty-road bike.

The KLT was shown with BMW's new integral braking system, which adjusts to many factors that Honda's did not. Virtual displays at INTERMOT proved a significant gain in stopping power. Every aspect of the LT's braking performance has been improved--even lever pulling ease. The discs are bigger. Like we said, everything. This system is NOT to be confused with Guzzi's linked brakes or even Honda's recent rig.

We saw a KLT with a navigation system, soon to be made available.

We saw a density-adjusting BMW riding jacket and underwear (using paraffin). Very trick. BMW's riding gear has come front and center.

We'd say the braking system was the biggest BMW story, aside from what was NOT there. As predicted here before, there were none of the numerous new Boxer predicted by the Brits, nor was there any K change beyond the brakes (which will spread, in amended form, to other Beemers later). Again, as predicted here, there was no R1150RS news buzz at all--none.

We'll stick with this prediction: you'll see an updated RT in a few months, with a new headlight treatment and improved brakes. Expect a KRS update a bit later. The KRS plans are still a little murky.

Racing report: Slightly contrary to what has been reported here, there will be ONE F650 in the 2001 Dakar race. That will be Andrea Mayer's machine. Race boss Berti Hauser claims the smoldering tire "mousse" problem has been solved.

In a final note, kudos to BMW's Formula One team for Ralf Schumacher's 3rd at the GP in Monza. BMW is now a strong third in

the manufacturer's standings--a tremendous feat in the first year of competition. It has been thirty years since a Formula One team has done so well in its first campaign.

~~~~~  
**Editor's Note** – All letters, contributions, write-ups, photo's, trip reports, route sheets, complaints, suggestions for this News Letter must be e-mailed to me, Glenn Martin at < gmartin928@aol.com >  
~~~~~

### IMPORTANT: RENEWAL NOTICE

Dooz're due 11/01/00, a paltry \$15/year. See application/renewal form on the last page & mail to Don E. or pay at the Oct 11th meeting.

### Classifieds (FREE Ads)

**For Sale: 1993 K75SA**, 36k miles, Mystic Red, 2nd owner, garaged, excellent condition. New front rotors and pads, ABS, Works rear shock with ARS system, heated grips, BMW bags, almost new Metzellers, 33/88, front fender extension, recent battery, front Run-n-Lites, full spline lube at 22k, synthetic fluids, detailed maintenance records. \$6100. Also available: BMW tankbag and saddlebag liners, Geza cover, all excellent condition. Call Mike LoGalbo at 609-395-8991 evenings or email to [kickstandsup@aol.com](mailto:kickstandsup@aol.com)

## Calendar

### October 11

Wednesday 7pm **NJS-BMW-R Club meeting at Schneider's**, 801 Main St, Avon, 732.775.1265 Chat & chew.

### Oct 13-15

#### **Colonial Virginia Motorcycle Rally (Formerly Known as Surf N Sand) BMW Motorcycle Club of Hampton Roads**

New dates/location/name At Jamestown Beach Campsites, location of the 1999 BMWRA Rally. Rally fee \$30(\$15 for 12/under) Pre-registration \$25 ( \$12.50 for 12/under). Includes two nights camping, Friday and Saturday dinner, rally pin, door prizes, coffee, tea , hot chocolate, doughnuts (Sunday morning), Field events, fresh roasted peanuts, award plaques and Charity Ride Saturday morning. Minutes away from Colonial Williamsburg and Yorktown, less than an hour from largest Naval Base in World. Information and pre-

## NJ Shore BMW Riders

registration Carol Beals 757-548-3381, 833 Copperstone Circle Chesapeake VA 23320 or [carolbeals@capitalone.com](mailto:carolbeals@capitalone.com)

### Oct 13-15

#### Das Treffen

Bavarian Manner Purling/Cairo NY 518-622-3261. no pins or patches. Just foliage rides and evening get togethers at the campfire. \$20 to tent (bring something for the pot-outdoor kitchen). Other accommodations available. For more information call Barbara Kill at 518-765-3201. Directions: NYS Thruway (I-87) - exit 21, left onto RT 23B, go 1/4 mile to RT 23 West toward Cairo (divided highway). Follow RT 23 6 miles, turn left at first Cairo exit on the left. Go thru the light into village, turn left at blinker (Mobile Station on left) County RT 24 and follow signs to Bavarian Manor.

### October 14

#### CYCLE FEST 2000

Fairleigh Dickinson University/Motorcycle Safety Program 10am to 4pm The Ultimate Motorcycle Event in Northern New Jersey!! Featuring: Hourly Door Prizes Ride-In Bike Show Motorcycle Skills Challenge Motorcycle Dealers Accessory & Riding Gear Vendors Food and MORE! What more could a motorcyclist ask for? Fairleigh Dickinson University - Motorcycle Safety Program River Road exit on Route 4 in Teaneck, NJ (5 miles from the GWBridge) For directions, call 800-338-3887 or email [motorcycle@mailbox.fdu.edu](mailto:motorcycle@mailbox.fdu.edu) CycleFest mission: to encourage riders to participate in all aspects of safe & responsible motorcycling ; to improve the public understanding of motorcycling ; and to thank our former/current students and sponsors for taking/supporting Motorcycle Safety Foundation program.

### October 15

**CANCELLED** – New Sweden BMW Riders Flea Market at RK BMW, Deptford, NJ

### October 15

#### 6th Annual US Lawn Mower Racing Assoc. East Coast Regional Extravaganza, Havre de Grace MD

Air show, car show and charity raffle on the grounds of the Aldino County AirPark. BIG HONKIN' PARTY WITH BLUES BAND at Mike and Mary Lou Boris' house the night before the race. Local race director Art Elsner 410.939.3986 [racemowe@aol.com](mailto:racemowe@aol.com)  
Racer liaisons:  
Mike and Mary Lou Boris: 410.988.9659

### Oct. 19-22

#### Biketoberfest 2000

Daytona Beach, FL

A festival celebrating the joy of motorcycling. Activities include racing, rides, shows, concerts & more. Contact the Daytona Beach Area Convention & Visitors Bureau, Call (800) 854-1234 for details or [www.biketoberfest.org](http://www.biketoberfest.org)

### Oct 27-29

#### 14th Annual Tarheel Travelers Halloween Campout

Zooland Family Campground, Asheboro, NC Registration: adults/\$30, children 5-12/\$25, 4 under free. Fri nite hotdogs, Sat. meal ,field events,movies,pumpkin carving, best decorated site, costume contest, Sat morn breakfast ride. Directions: from intersection 220 & us 64 in Asheboro, go south on us 220 6.4 miles to the Ulah-Troy exit. Go west to the "T" intersection (1.5 miles). Turn left. Go 1.5 miles to Zooland. Info Becky Gradus 919-847-4888 after 7pm, 919-790-0800 9am-5pm, 818 Mt Vernon Church Rd, Raleigh, NC 27614.

### November 4th & 5th

#### 2000 World Champ Punkin' Chunkin'

Directions: From the north (north of the C&D Canal): Travel south on Delaware Route 1. Upon reaching the Lewes area, turn right on Rt 9. Travel to Rt 5 and turn left heading south. Travel on Rt 5 until the intersection of county road 305 (PJ Auto Sales). Turn right on 305 and travel to county road 306.

#### Polar Bear 2000-2001 Ride Schedule

It is not necessary to be a member of the Polar Bear Club to do these rides. There is generally food at the destination and if you just want to go for a nice ride and join other folks feel free to attend. The cost to join the Polar Bear Club is \$15. and can be paid when you do your first ride.

To check on Polar Bear cancellations & updates call **908-722-0128**. These are general directions. Please feel free to use a map to find a better route.

#### October 29

CAPE MAY V.F.W., N.J. 19  
Congress St., Cape May, N.J. Ph#  
609-884-7961.

#### November 5

FISHERMAN'S WHARF BY THE  
DRAWBRIDGE, Lewes, Delaware.  
Ph# 302-645-6271. Take Delaware

Bridge to Rt #13 S. to Dover (approx 43 miles) you should be in left lane. Take Rt #113 S for approx. 20 miles, just before Milford take Rt #1 S. Go approx 20 miles: you should be in left lane to bear left on Rt #9 for Lewes: Go over bridge, make left to Fisherman's Wharf. Or take the Cape May Ferry. When you come off Ferry make a right, go 0.8 miles (Dairy Queen on right), make left to Fisherman's Wharf or pick up DEL. Rt. 1(Toll Rd \$1.00) at Smyrna you bypass Dover.

**November 12**  
 KNIGHTS OF COLUMBUS Pine St., Old Bridge, NJ Ph# 732-251-9817. Pine St. runs off Rt #18 E. by the Trailer & Truck Cap sale.

**November 19**  
 CORNUCOPIA, 176 Rt 209 North Port Jervis, N.Y. Ph# 914-856-5361. From Port Jervis take Rt #209 North 2 miles. Cornucopia will be on the right.

**November 26**  
 FORT DIX CLUB Ph 609-723-3272. From Bordentown go on Rt. 206 South pass NJTPK to Rt. 68. Go 8 miles to General Circle take last exit (follow signs for Wrightstown) Go 1 mile to TRAFFIC LIGHT. Make right on Pennsylvania Ave. Go to stop sign and make a left. Go to the second street on left, which is Alabama. Make left on Alabama. Fort Dix Club will be on your right.



**Schneiders**  
**RESTAURANT**  
*Casual dining for lunch and dinner*

**SCHNEIDER'S SELLS SEAFOOD BY THE SEASHORE**

We are also known for our hearty German-Austrian-Hungarian dishes. We're not too bad with the steaks, Italian, American and deli meals, either.

We broil, we fry, we grill, we sauté. Mrs. Schneider's been dishing 'em out for over 37 years (with help from family and friends). We ain't fancy, just GOOD!

**COME FOR THE MEAL, STAY FOR DESSERT**

Check out our fountain treats of homemade ice cream. Whether for nostalgia, or for the first time, go back to that time when sundaes, sodas, shakes, malts and banana splits were real. And were served in ice cream parlors by waitresses. And were brought to you at your table. No kidding! And the ice cream was homemade on the premises by the owner. TRUE! Well, you've found that place again, at SCHNEIDER'S (we just never stopped the old tradition - Mom wouldn't let us!)

Open all year, Tuesday through Saturday, from 11:00 a.m.. We close at 8:00 p.m. on Tuesday, Wednesday and Thursday, 9:00 p.m. on Friday and 10:00 p.m. on Saturday.

**New Jersey Shore BMW Riders**

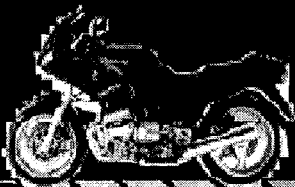
c/o D. Eilenberger  
1213 Pond Road  
Spring Lake Hts, NJ 07762-1962

**TO:**

Club Meeting Wednesday, October 11th / 7pm  
Schneider's in Avon, Chat & Chew  
801 Main – Avon – NJ – 732.775.1265



Motorcycles



**CROSS COUNTRY  
BMW**

**875 MIDDLESEX AVE/RTE 27**

**METUCHEN NJ • 732.635.0094**