

# November 2004 NEW JERSEY SHORE BMW RIDERS Inc

Website: <http://www.njsbmwr.org>

Messageboard:

<http://groups.yahoo.com/group/njsbmwr/>

**Skip Palmer, President 732-493-0702**

**Roger Trendowski, VP 732-671-0514**

**Carl Cangelosi, Secty/Treasurer 609-275-9387**

**Dennis Swanson, Trustee and Cub Reporter**

**Don Eilenberger, Trustee and Newsletter Editor**

**John Welch, Trustee**

**Glenn Martin, Strange But True Reporter**

**Art Goldberg, Publisher**

"In our system, at about 11:30 on election night, they just push you off the edge of the cliff and that's it. You might scream on the way down, but you're going to hit the bottom, and you're not going to be in elective office." *On loss to Ronald Reagan in 1984 presidential election; in NY Times, 1987 - Walter F. Mondale*

## President's Message

---

This past month, several members attended the monthly meetings of both the Skylands and New Sweden BMW Riders to tell them about the changes to our Holiday Toy Collection and ask for their financial support of the Toms River Specialized Children's Hospital. Both clubs were extremely generous in their donations. An anonymous group of businessmen became aware of our annual gifts to the hospital has given us a check matching the total amount donated by all three clubs. This year, we are, in a position to substantially help meet the needs of the hospital.

I would like to personally congratulate our newly nominated officers for 2005; Roger Trendowski; President, Dan Thompson; Vice President, Carl Cangelosi; Treasurer / Secretary, and John Welch; Membership Chairmen. Having worked closely with each of these men this past year, I know the club will continue to improve and have a very successful year.

Autumn marks the end of the riding season for some, but many of us have learned that cooler temps and empty roads are the best time to enjoy our sport. Two weeks ago, ten riders followed the Delaware River along some of the "One Lane, but Not One Way" roads to Stokes State Forest. The colors were at their peak. Even though, the sun never made an appearance, the ride and good company made for a great day.

Last Sunday marked the beginning of the AMA Polar Bear Season with the annual ride to Cape May. We had almost a quarter of the club come out to enjoy the sun and mid-seventies weather. Our route took us south through the Pine Barrens, cranberry bogs, and



salt marshes to the restored Victorian village of Cape May. Many of us enjoyed lunch on the open air docks at the Lobster House Restaurant before returning home.

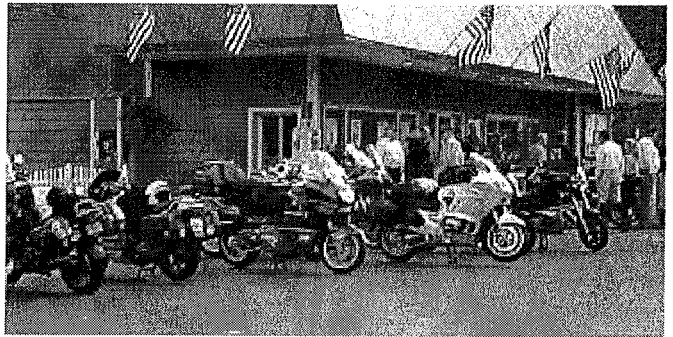
See you at meeting this Wednesday, the tenth.

*Skip Palmer*

## Rumble on the River

---

*Dennis Swanson*



October 10...Here it was, the long anticipated showdown of the NJ BMW Riders.

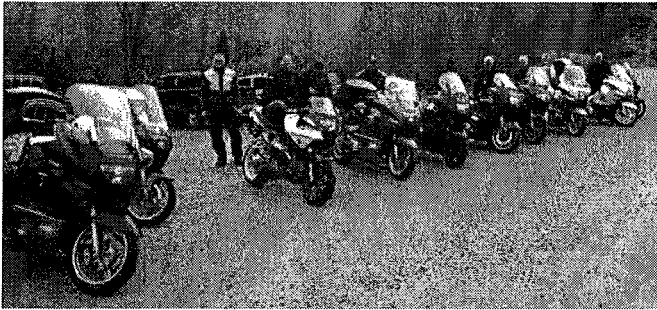
Who would claim bragging rights for the next year? Which club would produce the biggest number? Would we be able, at long last, to quiet the Skylands Riders and the New Sweden Group?

The day dawned cool and cloudy and the sky to the West was dark and forbidding. Would the weak turn over and hide under the covers? Would the wimps say that their wives wouldn't let them out to be with real men and women? Who knew?

The "Skipper" had put out the summons. We would meet at "Our Wawa" in Jackson. The time was nine and

# One Lane, But Not One-Way Tour

*Skip Palmer*



Sunday morning, October 24<sup>th</sup>, Jim Hoehl, Art Goldberg, Jim Cavallo, Pete Bartos, Glenn Larson, Tom Dockery, Nowell Herman, and I met at the Jackson Wawa at 8 AM for a tour of the original one lane roads along the Delaware River. We later met Harold Gantz and Al Peirson in Trenton. North of Milford, NJ, the roads narrow to about twelve feet and at times are closer to eight feet. Fine for bikes, but it is tight for oncoming cars. Some of these roads seem to be paved with a very creative, continuous pattern of pot-hole patches. Several riders commented about their bike suspensions.

The temps were in the forties and at times reached the mid-fifties; however, the sun never really burned through the clouds. The fall colors were good to Phillipsburg and peaking at the Gap.

In Carpentersville and Hutchinson, we saw evidence of the water damage from the hurricane last month. One house had the high water line marked on the top sash of the second story window (twenty + feet above the road).



We took RT #526 to Allentown, I-195 W to Trenton, NJ#29 N to Frenchtown, RT #619 N to Milford, RT #627 N to Rieglestown, River Road N to Carpentersville, Main Street through Phillipsburg, RT #621 N to Harmony Station, River Road to Roxbury Station, Foul Rift Road to Belvidere, across the bridge to PA and follow Riverton Road N to Portland, across the river again back into NJ and RT #94 to Blairstown (Old Copper Mine Road is still closed after two years of government work), Millbrook Road to the Delaware Water Gap National Recreation Area, RT #615 N to Layton and RT #206 at Culver Lake for lunch.

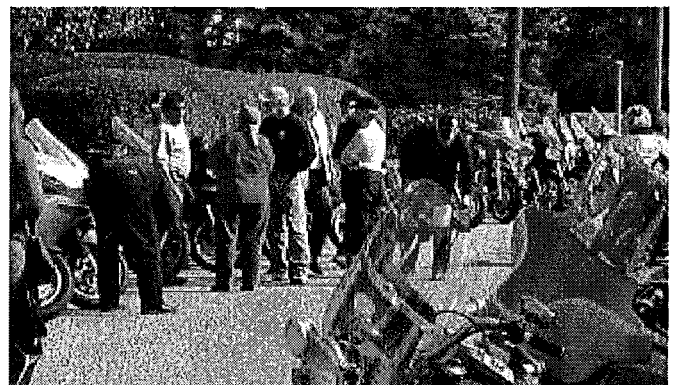
The return route followed RT #519 S to Bloomsbury, RT 579 S to Trenton, RT #29 S to I-195 E, and home.

## First Polar Bear Ride.....Oct 31

*Dennis Swanson*



It wasn't polar bear weather as we met at the Jackson Wawa for the ride to Cape May. It was one of the nicest days of the year. The sky was clear and the temperature was in the high sixties and low seventies. We enjoyed the usual kicking of tires, spreading gossip, telling lies and complaining about this and that as we waited for everyone to arrive. Even Capt. Don somehow got himself out of bed and rolled into the parking lot at 9:37 as we were moving out. I forgot to count, but there were about twenty Shore Riders assembled. This includes Mo's trike.



South on the five hundred and six hundred series roads through the Pinelands does not present a challenge to motorcycling and Skip set a moderate pace. It didn't

this on his K75, which shows how capable both John and the K75 are.

Congratulations are in order to John!

## **Babblings of Biker Tom. . .**

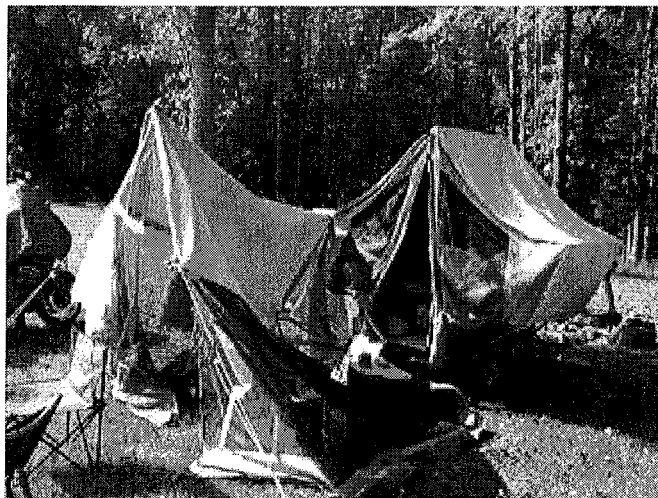
*Tom Spader*

So, with the weather related postponement of the September AMA Superbike races in Danville, VA to October, it proved to be a busy month. Also on the calendar was Daytona Beach's Biktoberfest. . .which is a scaled down version of March Madness a/k/a Bike Week. Will highlight both events to hopefully create some interest for other member's to join in next year.

The very competitive races were worth the wait with perfect weather for camping, good eats, adult bevs and entertainment. The group here were lined up like the Civil War pictures of Abe Lincoln and the Generals. Danville is a historic area and played a vital role in the surrender of the South so the picture was appropriate. The 'Condo' provided the new look in camp tents. Alabama Frankie and our buddy Neville, Bob Truex.. all LT riders joined me and new BMW owner (R1100S) Duane, prospective member of BMWBMW. Nice time had by all. . .funny how the diverse and multi-interested beemer folks tend to cluster.



Unfortunately, adult bevs mixed with submarine sandwiches and chilli sometime creates gas as evidenced by condition of my condo the next morning. Initial investigation pointed to the flatulent blast coming from the Truex tent slightly to the rear. That'll be the last time I set up that close to Bobby. Yikes, what a wake up call.



So that was that and two weeks later I met up with Bobby and Alabama Frankie at the BMW campgrounds just north of Daytona. Not as crowded as March so ample space was available as most of the noisy H-D Fakers were at the Bulow camp across the highway.

Frank brought a pop-up trailer he named 'Tajh of Mamie' which features a garage and battery operated portable TV. After setting up the Tajh we all watched the final presidential debate and had an audience of 12 before it was over. . .all ready to fight.. What next?

BMW of Daytona was packed with bikes and people and while they weren't giving anything away, they did have 15 or so new '04 R1150RTs for \$13,000. Not a bad deal if you like the gray color (only choice for the \$13k) which apparently weren't selling too well worldwide.

Retired to Florida club members Vic Commune and Roland Marchetti were spotted tire kicking with Frank and Bobby just prior to leaving for a tour of the vendor area near the speedway. Those Florida guys (like a former club prez) have money to burn so maybe retirement isn't that bad.



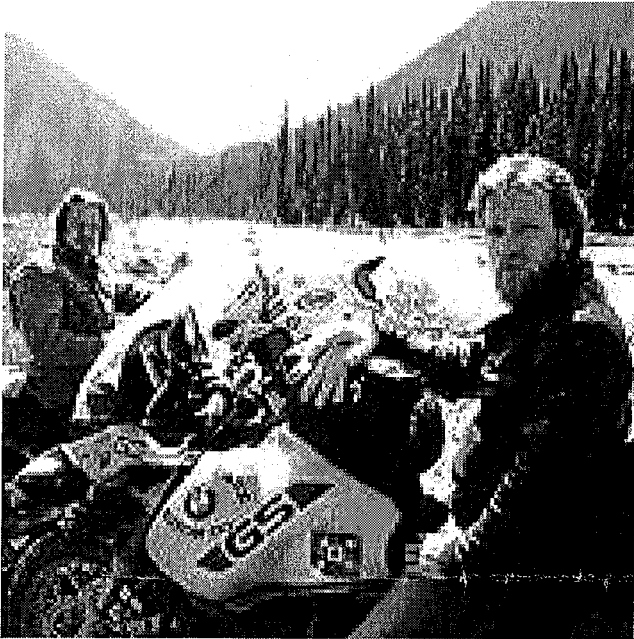
## Actor friends go 'Long Way'

### Find this article at:

[http://www.usatoday.com/life/television/2004-10-26-long-way-from-home\\_x.htm](http://www.usatoday.com/life/television/2004-10-26-long-way-from-home_x.htm)

By Shelley Emling Special for, USA TODAY

LONDON — As the new face of trendy U.K. knitwear brand Pringle, Ewan McGregor has been sporting a clean-shaven look — and a lot of luxury scarves — in recent weeks.



Charlie Boorman, left, and Ewan McGregor set out from London on April 14, trekking through 13 countries on their motorcycles.

Indeed, his appearance during a recent interview was a far cry from the bushy beard and unkempt persona he finessed during a 20,000-mile motorcycle trip with best friend and fellow actor Charley Boorman. The pair set out from London on April 14, and with some help from trains and planes they trekked through 13 countries, ending up in New York City July 29.

Their journey circumnavigated hostile terrain through the Ukraine, Siberia, Alaska and Canada.

"Riding into New York was just amazing," McGregor says. "We couldn't believe we had done it, and we just started blubbing as we looked at the skyline."

A six-episode Bravo series chronicling the journey, *Long Way Round*, premieres Thursday (10 p.m. ET/PT). A book published by Atria/Simon & Schuster is due Nov. 2.

See more on this series at the website above.

## November Rides and Events

Nov. 10<sup>th</sup>: Monthly meeting @ Schneider's

Nov. 14<sup>th</sup>: AMA Polar Bear Ride to Knights of Columbus, Pine St., Old Bridge, NJ

Nov. 21<sup>st</sup>: AMA Polar Bear Ride to Cornucopia, 176 Rt. 209 North, Port Jervis, NY

Nov. 28<sup>th</sup>: AMA Polar Bear Ride to Fort Dix Club, Alabama St., Fort Dix, NJ

Dec. 5<sup>th</sup>: AMA Polar Bear Ride to Montgomery Cycle, 2901 Bethlehem Pike, Hatfield, PA

Dec. 5<sup>th</sup>: **NJSBMW** Holiday Party 3 PM at Rooney's Crab House, Ocean Ave., Long Branch, NJ. We will be collecting your toys for the Toms River Specialized Hospital at the dinner.

Dec. 6<sup>th</sup>: Delivering our gifts and toys to the Toms River Specialized Hospital at 6PM

Dec. 8<sup>th</sup>: Monthly meeting @ Schneider's.

## Senseless Space Filler

