

December 2004 NEW JERSEY SHORE BMW RIDERS Inc

Website: <http://www.njsbmwr.org>

Messageboard:

<http://groups.yahoo.com/group/njsbmwr/>

Skip Palmer, President 732-493-0702

Roger Trendowski, VP 732-671-0514

Carl Cangelosi, Secty/Treasurer 609-275-9387

Dennis Swanson, Trustee and Cub Reporter

Don Eilenberger, Trustee and Newsletter Editor

John Welch, Trustee

Glenn Martin, Strange But True Reporter

Art Goldberg, Publisher



"It is not the critic who counts, not the man who points out how the strong man stumbled, or where the doer of deeds could have done better. The credit belongs to the man who is actually in the arena, whose face is marred by dust and sweat and blood, who strives valiantly, who errs and comes short again and again, who knows the great enthusiasms, the great devotions, and spends himself in a worthy cause, who at best knows achievement and who at the worst if he fails at least fails while daring greatly so his place shall never be with those cold and timid souls who know neither victory nor defeat.." *Theodore Roosevelt*

President's Message

I am truly proud and grateful to have served as president of our club this past year. It afforded me the opportunity to meet and work closely with so many fine individuals and valued organizations dedicated to making our sport even better.

I'd like to extend my appreciation to all the members of our various boards and committees who gave so much of their time and energy to make this year so enjoyable. I cannot remember a time that I did not have the needed volunteers and support to get any task accomplished.

One of the most rewarding experiences I had as president was sharing in the camaraderie with all of you, I enjoyed in working toward the common goal of providing quality events and more rides for our members.

Additionally, I would like to extend warm wishes to all the members for a healthy, happy, and prosperous New Year.

Thank you!
Skip

Polar Bear Ride to Lewes...Nov. 7

Dennis Swanson

I overslept, a convenient excuse, and was thinking of skipping this ride. I was out and walking the dogs. Who should come along but Major Tom Spader on his trusty RT. He queried me. He questioned my sanity. He stated that it was a beautiful day and that I would be quite mad not to follow him and 19 Shore Riders to Delaware. I pondered. Was I losing my edge? Was I becoming a relic of the past? I had to accept this challenge.



They either ride or eat!!! One of four tables for the 18 lunchers at the DogFish Pub in Rehobeth Beach.

I was soon roaring down Interstate 195 and hoping to rip past Spader. Too late. He had too much lead time. Nevertheless, I did meet up with him and 19 others and soon we were all crawling down Interstate 195 toward the Turnpike and Delaware Memorial Bridge. Actually, Skip led a quite vigorous pace and we soon met up with about 15 or so New Sweden Riders at the other side of the bridge. After exchanging greetings, we all set forth

There were also appointments made to the following positions:

Ride Co-Captains: Skip Palmer and John Malaska
Newsletter Editor: Don Eilenberger
Membership: John Welch
Health/Welfare: Dan Thompson
Trustee: Skip Palmer

Congratulations and condolences to all our officers for the year 2005!

Polar Bear at Old Bridge? Nov. 14.....

Dennis Swanson

Could it be true, a polar bear this far south? Capt. Don and I decided to ride out there and explore. Cap was in the lead and fixed on his unreliable GPS.

The day was cool, but quite nice for this time of year and certainly not polar bear weather. Excitement gripped us. What would we find? West on route 18, we figured it would be easy to find the Knights of Columbus building where the polar bear was rumored to be. If I had been alone, I would have not used a GPS.

Those high tech gadgets only mean trouble. I would have used a time-honored method of blind reckoning, sense of direction or following a group of motorcycles. It rarely fails. Nevertheless, I put my trust and faith in the Cap. He had been reliable before, at least some of the time.

We finally reached Old Bridge, but where they keep the old bridge remains a mystery. We fell in behind a group of riders on Geld Wings. We didn't need to follow them, however, we had a GPS. We followed them anyway.

Through Old Bridge and into East Brunswick and then we realized that they were not seeking the polar bear.

That didn't matter, Cap followed them into a shopping mall. I waited for him to reappear out on route 18 and we set our course easterly. Cap had seen a Catholic Church and figured the K of C would be nearby. We turned off and went a few miles to a Pakistani gas station. The attendant didn't speak English. It was a cinch he didn't know where the polar bear might be. He probably didn't even know what a polar bear was. He did, however, have a map posted, but I don't think he knew that either.

We consulted the map and at least knew we were going in the wrong direction.

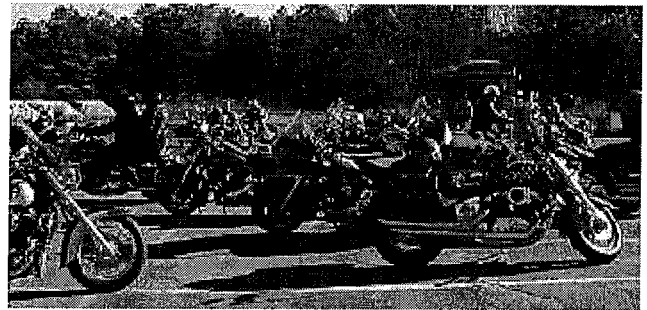
Enough of this story. We found the polar bear and I signed in. Dave Cushing said the Skylands riders had been there and left about half an hour ago for a free

luncheon put out by one of their members. No shore Riders were to be found. The only BMW in the parking lot was owned by a guy named Leo from Brooklyn who said he lived in a Palestinian neighborhood.



Professor Dennis and Leo from Brooklyn

He thought Old Bridge was the country. He came toward me and said, "Is it really you?" I said, "I don't think so." Turns out he thought I was Brad Pitt, but I put him right about that. He wanted to know if there were any BMW clubs in Brooklyn so I passed him on to Cap. I quickly placed my helmet on and started my engine. I don't know what Don told him.



Since we missed the Skyland's luncheon, we decided for a greasy sausage sandwich at the Collingswood Flea Market. Then it was on to home to watch the Giants lose. Another riding adventure had passed!

2005 Planning Meeting

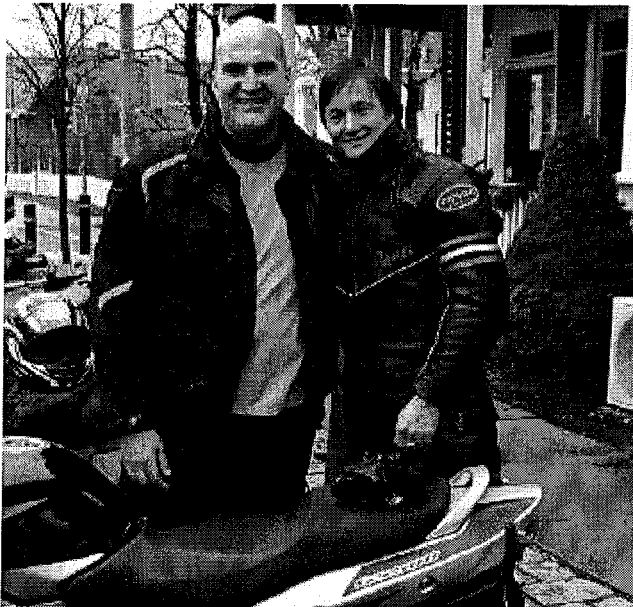
Don Eilenberger

In an attempt to overcome our reputation for sloth, the newly elected officers asked to hold a pre-2005 planning meeting so we can go forwards as soon as they take office to better and greater club activities!

The meeting was held on November 27th at Crown Engineering. In attendance were: Skip Palmer, Roger Trendowski, Dan Thompson, John Malaska, Bob Truex, Doc Spader, Art Goldberg, Don Eilenberger and Professor Dennis.

ride to the Polar Bear Event at Cornucopia, NY. Along the way, we met Alex Edly in Piscataway and Carl Cangelosi in Oldwick. We arrived in Hackettstown at 9:30 to meet Max Monaco and four friends from the Skylands Club.

The temps were in the low fifties and at times reached the upper fifties; however, the sun never really burned through the clouds. The roads were damp all day and at one point we came across a slick of radiator fluid on the road. All of the riders made it past the slick except me. Unfortunately, my rear tire is slick and scalloped. After several alternating rear tire slide-outs and considerable counter steering with both feet firmly "skiing" the road I was able to eventually regain control. The moral is that new tires are cheap compared to the obvious unpleasant alternative. Eleven hundred pounds of bike and rider traveling at forty something mph with out traction is really quite an experience!



Glenn and Janet by the Dimmick Inn – Milford PA

Max led us through Warren County on Routes #613 to Allamuchy, Shades of Death Road, to Route #611 North to Hope. There, we picked up Route #521 North through Sussex County to Blirstown, Culvers Lake.

We arrived at The Cornucopia Inn in Port Jervis, NY by 11:30. Joe Christy was waiting for us. Glenn Larson was working the AMA booth and Dave Cushing was at the Flight "B" sign-in desk. We left at noon for Dimmick's Inn in Milford, PA for lunch. I had reserved a table for fifteen. When we arrived, Glenn Martin, Janet and their friend, Linda, were waiting for us.



Janet and Linda

The return route followed RT #206 South to Old Mine Road South (RT #615) through Peter's Valley, Flatbrook, Walpack Center, and Millbrook. We rode East on Route #602 to Blirstown and South on RT. #521 Hope and Rt.#519 South. Just north of Stewartsville, we took the Liberty Road cut-off to Bloomsbury and Rt. #579 South. The group split up at Route #31 South and Rocktown Road. I couldn't resist choosing the narrow country lanes with loose gravel and unpredictable turns! It's just my thing; and my "GS" loves to slide around those bends.

Thank you Max and fellow Skylands Riders for your company and sharing the great roads in Northwestern Jersey with us!

Cross Country Open House Nov 27th

Dennis Swanson

For November it was a nice day and warm enough for even the most timid to ride. So Capt. Don and I drove to this event fully expecting to take some abuse from those who rode. We weren't disappointed. As a concession to those hardy souls we did put the top down on the way home. After all, we had heated seats.

This was a really special event. Tables of tasty sandwiches and pastries were arrayed in the showroom. Hot dogs were offered outside at a pushcart and in the shop one could find Italian specialties and soft drinks. Everyone enjoyed the great food. In addition, prices were marked down 15%, so it was the time to pick up that special item that you had wanted in time for the holidays.

At Califon, we followed River Road along the South Branch of the Raritan River to Rt. #513 past Clinton, Pittstown and took RT. #579 South. Just North of Ringoes, we turned on Rt. #604 West to Sargentsville and the "Covered Bridge" before Stockton. At Stockton, we took Wolverton Road up the hill to Sandy Ridge Road to avoid the traffic from Stockton to Lambertville. Our route left Lambertville on the Rockton-Unionville (gravel road past The Unionville Vineyards) to Rt. #607 toward Hopewell. We continued on Rt. #569 to Princeton came and home via Rt. #33.

Total miles for the day were only about 200, but the day was terrific.

December Rides and Events

Dec. 5th Holiday Party 3 PM at Rooney's Crab House, Ocean Ave., Long Branch, NJ. We will be collecting toys for the Toms River Specialized Hospital at the dinner.

Dec. 6th Deliver the gifts and toys to the Toms River Specialized Hospital at 4 PM

Dec. 8th Monthly meeting @ Schneider's.

Dec. 12th AMA Polar Bear Ride to Schock's Harley Davidson, Snydersville, PA

Dec. 19th AMA Polar Bear Ride to Cream Ridge Golf Course, Route #539, Cream Ridge, NJ. AMA Christmas Party, [Please bring an unwrapped gift for the Children's Hospital]

Jan. 2nd AMA Polar Bear Ride to The Cabin, 984 Route #33, Howell, NJ

Jan. 9th AMA Polar Bear Ride to DeTomasi's East Five Points Inn, Route #557 & #540, Vineland, NJ

Jan. 12th Monthly meeting @ Schneider's

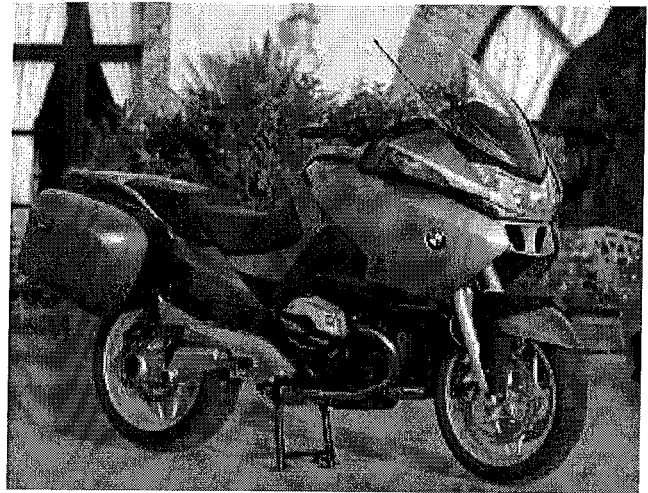
Strange but True

Glenn Martin, Internet Reporter

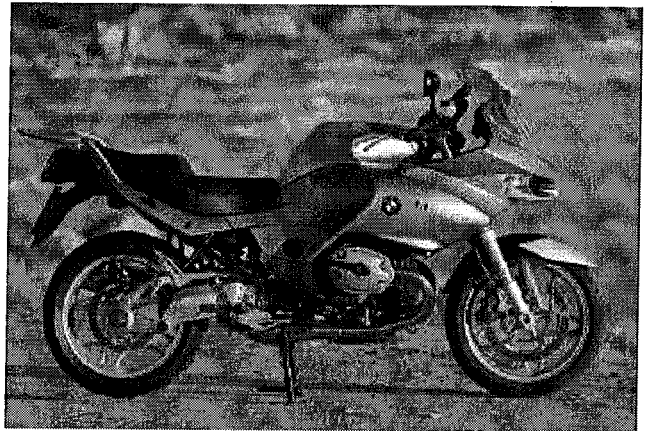
New BMWs break cover

These are the first official pictures of the new BMW R1200RT and R1200ST, which the German firm plans to launch early next year.

Both bikes are based on the Boxer engine from the R1200GS and are expected to put out around 110bhp.

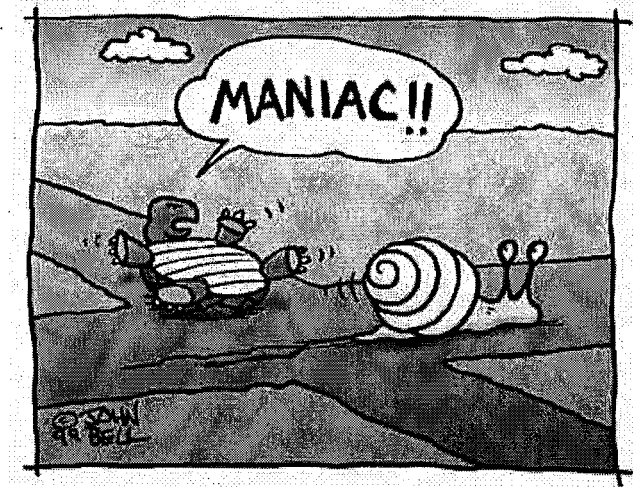


The RT is the full on tourer with electronic windshield and is expected weigh just under 260kg wet, around 30kg lighter than the current 1150 model.



The ST sports tourer also drops it's weight by around 30kg to just under 230kg.

BMW plans to ship the RT in January with the ST following on in Spring.



No Comment