

September 2006 NEW JERSEY SHORE BMW RIDERS Inc

Dan Thompson , President 732-229-0904
Dr. Tom Spader, VP 732-295-2603
Carl Cangelosi, Bookkeeper 609-275-9387
Dennis Swanson, Trustee and Cub Reporter
Don Eilenberger, Trustee and Newsletter Editor
John Welch, Trustee and Membership Chair
Skip Palmer, Trustee and Ride Co-Chair
Roger Trendowski, Trustee
Glenn Martin, Strange But True Reporter
John Malaska, Publisher
John Malaska, Ride Co-Chair



"...Beware the autumn people...For some, autumn comes early, stays late, through life, where October follows September and November touches October and then instead of December and Christ's birth there is no Bethlehem Star, no rejoicing, but September comes again and old October and so on down the years, with no winter, spring or revivifying summer. For these beings, fall is the only normal season, the only weather, there be no choice beyond.

Where do they come from? The dust. Where do they go? The grave. Does blood stir their veins? No, the night wind. What ticks in their head? The worm. What speaks through their mouth? The toad. What sees from their eye? The snake. What hears with their ear? The abyss between the stars.

They sift the human storm for souls, eat flesh of reason, fill tombs with sinners. They frenzy forth. In gusts they beetle-scurry, creep, thread, filter, motion, make all moons sullen, and surely cloud al clear-run waters. The spider-web hears them, trembles—breaks.

Such are the autumn people. Beware of them."
Ray Bradbury, *Something Wicked This Way Comes*

President's Message

As I sit and write this message, albeit, late and with a disdainful reminder from our editor, I begin to wonder whether riding is as important to me as it once had been during my short, but active life.

With all of the responsibilities of family life, and the other four letter word, I find myself pulled in every direction. I also find that other hobbies constantly want to draw me away from my trusty steed, with promises of excitement, joy and a renewed verve for life.

Do I trust these promises, give in to the daily pressures of life and let dust collect, tires deflate and petrol go stale deep within my machines belly? Or perhaps, I should become passionately disinterested in a sport

that has provided pleasure, friendship and a sense of adventure with every turn of the odometer. Friends, I do not know where this malaise has crept up from, or why the monster would want to take away this love of riding, but I can assure you, if the gauntlet has been thrown at my feet, I will mount my steed and ride directly at the goliath charging without fear into the unknown.

Let's not forget the Black Diamond Rally in the Pocono's, Sept 29-Oct 1 2006. If you have not sent your form for the BD Rally, do so soon. The Black Diamond Rally registration was sent, thanks to Carl for collecting the forms and the timely manner in which our cabin was procured. I am sure there are spots available so get your registration forms and send them. If we are going to have a Rally within Rally, or does the First Annual Parasite Rally fit? Lets have a strong showing of NJSBMWR members.

Also I would like to remind everyone, The New Sweden BMW Riders are holding their annual rally, the 24th I believe, the weekend of Sept 15, 16 and 17. More info can be found on their website.

Ride safe
Prez. Dan

Ramblings of Biker Tom

The editor

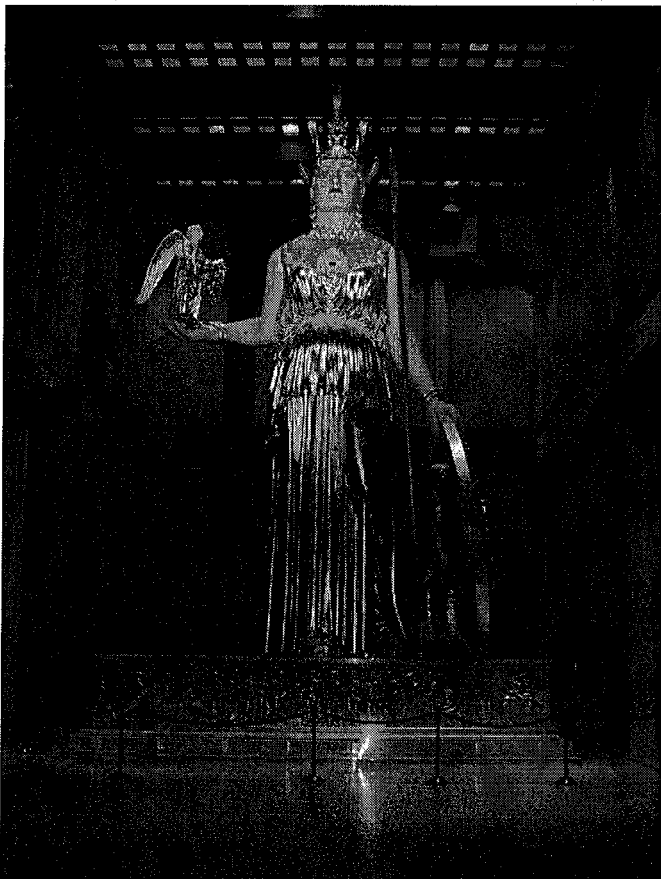
Apparently Biker Tom has quit rambling just about the same time he retired from Goodyear (the blimp people). Coincidence? I think not. His stories always came from his Goodyear email address about mid-day.

We're hoping he finds at least a part time job in his retirement so he can contribute again to the newsletter. If anyone knows of a position for a tire salesman, with computer email access, contact Dr. Spader please!

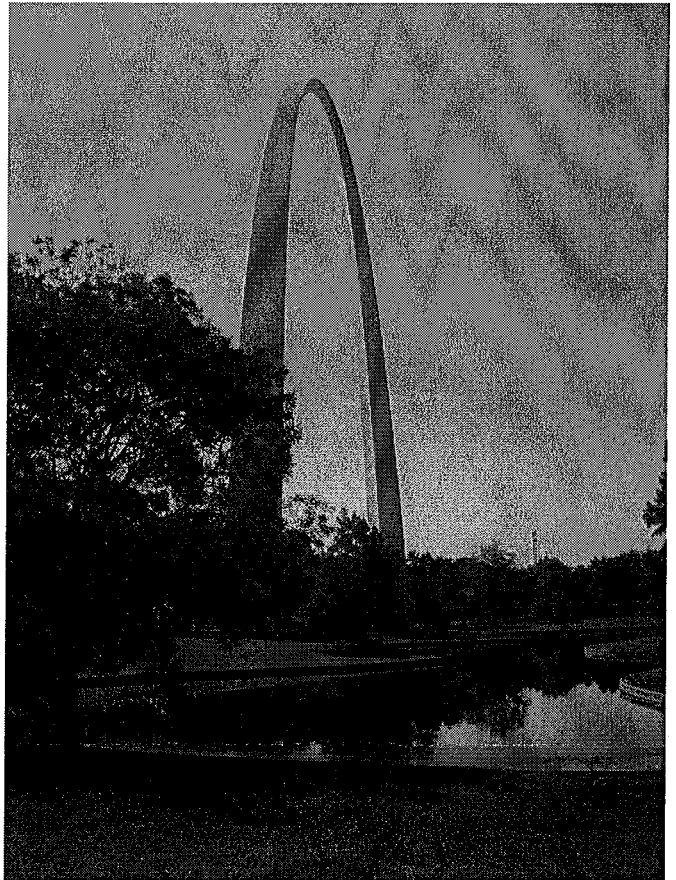
monuments were taken down -- except for the Parthenon. Seems the folks in the city had grown attached to their temple to Athena. In 1932, with the plaster crumbling, they re-built it in concrete.



By 1992 they had added a statue of Athena, over 40 feet tall, inside the building -- as close a copy of the original as they could get with the records they had available. Of course, some substitutions were made: the skin is concrete, not ivory; the eyes are painted, not inlaid with lapis lazuli. In 2002, the statue was gilded (with leaf, instead of the 1/8" thick sheathing of the original).



I spent Tuesday night somewhere in Indiana, where I found two Wal-Marts on opposite sides of the main road, within a half mile of each other. By Wednesday noontime I had reached St. Louis, where a visit at the Gateway Arch was in order. I made sure to put my foot into the Mississippi -- on the western shore.



From there, I went to Springfield, where I visited my cousin and stopped at a Wilson's Creek National Park and civil war battlefield. Seems that while the war of secession was going on, Missouri was having its own, smaller civil war. The governor supported the Confederacy; the legislature supported the Union; and both sides had access to troops. Missouri wound up sending representatives to both the US and CS legislatures.

My next history lesson was in Topeka Kansas, where I visited the Brown v. Board of Education National Historic Site. The schoolhouse at the center of that court case is now a museum dedicated to the story of the civil rights movement. (Or, perhaps, civil rights movements -- it mentions Matthew Shepard as well as Amadou Diallo in its timeline of recent developments.)

As I rode from Kansas into Nebraska, I was surprised to discover that Kansas is not the flatter-than-a-pancake state I had been lead to believe. Rolling hills made for lovely riding. Of course, the Great Plains had its own weather challenges. As I was riding in South Dakota on what The Weather Channel had forecast to be a clear day, the sky darkened around me. I found myself

Strange But True

Glenn Martin – Internet Reporter

BMW Announces New Entry-Level Bike

August 7, 2006 - Playgrounds across the country will be buzzing with the news - The **BMW Kids' Bike** has a new, sleek look but the same impeccable quality and safety standards as its predecessor.

Featuring an easy-to-install pedal system and adjustable seat, the Kids' Bike is designed to grow along with children from the initial stages of learning how to ride, to big kid pedaling.

Using their feet first, children will develop a sense of balance early on without training wheels. Children can practice steering and hand-braking skills on the push-bike until they are ready for pedal-powered biking adventures.



The push-bike can easily be converted into a regular children's bicycle by fitting the solid plastic pedals with reflectors and chain. In BMW's trademark design and innovative style, the Kids' Bike comes in a striking blue and gray color and features a resilient bike frame and ergonomically shaped seat saddle and handle bars providing both comfort and safety.

Kids have plenty of places to stash treats accumulated on bike rides including the zippered crossbar bag perfectly fitted into the space between the bicycle frame, and a handlebar bag integrated into the detachable handlebar padding. Bag materials made out of sturdy synthetic materials with simple assembly required.

The BMW Kids' Bike retails for \$300 and is intended for children ages two-and-a-half to six years old. It weighs 13 pounds without and 18 pounds with pedals.

The maximum weight load for the Bike is 110 pounds. The frame ranges from 15 to 18 inches.

To purchase the BMW Kids' Bike, visit a BMW dealership, call 1-888-269-6654 or visit the [BMW website](#).

Garmin Zumo 550 – Motorcycle GPS

<http://www.garmin.com/zumo/>

Customize your ride with zūmo 550. Born to run, built to last, this rugged GPS navigator is always ready to ride. Designed by bikers, zūmo's motorcycle-friendly

features make it easy to operate while in the saddle. From back roads to rallies, its preloaded maps and high-end navigation features give you the freedom to go where you want.

Durable and intuitive, zūmo is built specifically for motorcycles:

- Glove-friendly touch screen with left-handed controls makes it easy to operate
- High bright sunlight-readable, UV-resistant display makes it easy to view your screen
- Motorcycle console for trip information, including fuel gauge to warn you when its time to fill up
- Motorcycle mount with universal mounting hardware so you can mount it anywhere
- Included motorcycle mount and automotive mount (with integrated speaker) for riding or driving
- Custom caps, available in a variety of colors, to reflect your style
- Vibration-tested, waterproof and built with fuel-resistant plastics to withstand the elements

Upcoming Rides and Events

Skip Palmer

- Sept. 10th ~ Concoure d'Elegance at both the Radnor Hunt Club and in Bucks County PA
- Sept. 13th 7 PM ~ Monthly meeting at Schneider's Restaurant, Main St., Avon NJ
- Sept. 15th ~ 17th ~ 24th Annual New Sweden's Last Chance Rally
- Sept 15th – Buckingham Auto Show, Bucks County, PA – just past New Hope
- Sept. 29th ~ Oct. 1st ~ 2nd Annual Black Diamond Rally in the Poconos & **Parasite Rally**

FOR SALE

1992(?) K75 Standard with a Parabellum Scout headlight/fairing. Low miles (18,000?), price unknown, contact Willie Egerter 732-892-7283.

2002 R1150RT, 30,000 miles, yes it had been dropped, in my garage. Comes with Shoie X-11 helmet and BMW pants. Asking \$9,000. With tank bag and side cases. Art Goldberg (732) 780-9772

1999 K1200LT, Basalt Gray, 44K miles, all service up to date, fresh tires, everything works, many extras, looks and runs very very good. \$8,200 obo. Harold Gantz, 856-234-4240, hgantz@magpage.com