

# November 2007 NEW JERSEY SHORE BMW RIDERS Inc

Tom Spader, President, 732-295-2603  
Jerry Rouvrais, VP 732-870-8440  
Carl Cangelosi, Bookkeeper 609-275-9387  
Dennis Swanson, Trustee and Cub Reporter  
Don Eilenberger, Trustee and Newsletter Editor  
John Welch, Trustee and Membership Chair  
Skip Palmer, Trustee and Ride Co-Chair  
Roger Trendowski, Trustee  
Dan Thompson, Trustee  
Glenn Martin, Strange But True Reporter  
John Malaska, Publisher  
John Malaska, Ride Co-Chair

Club Membership Application at:  
[http://www.njsbmwr.org/NJSBMWR\\_Application.pdf](http://www.njsbmwr.org/NJSBMWR_Application.pdf)

*Elections are won by men and women chiefly because most people vote against somebody rather than for somebody.* Franklin P. Adams (1881 - 1960), Nods and Becks, 1944

*No sun - no moon! No morn - no noon -  
No dawn - no dusk - no proper time of day.  
No warmth, no cheerfulness, no healthful ease,  
No comfortable feel in any member -  
No shade, no shine, no butterflies, no bees,  
No fruits, no flowers, no leaves, no birds,  
November! Thomas Hood (1799-1845), in the poem called No!*

## President's Message

Please mark your calendar for our HOLIDAY PARTY on Dec 8<sup>th</sup> at Farrell's Stout & Steak House in Point Pleasant Beach. There will be a nice selection of fish, beef, chicken, veggie and pasta dishes offered on their premium dinner buffet and other delights to placate every taste bud. Starting time will be 6 PM and should run until 9:30 or so with a cash bar operated throughout the evening to squelch your adult fluid wishes.

In addition, Farrell's offers Irish entertainment in their lounge that should commence about the time our event dwindles to a close...so plan on a nightcap and enjoy some Jersey Shore Irish Riviera music to top off the evening.

All members are encouraged to attend this gala social event...tickets will be \$30 with NJS sponsoring \$10 for club members. That deal applies to both the member



and **one** guest...wife, husband, significant other or whatever is politically correct. All other tickets will be \$30.

Please forward your check to Carl Cangelosi, 20 Beechtree Lane Plainsboro, NJ 08536 or bring it along to our November 14<sup>th</sup> meeting.

Another special event as the year winds down is the Annual Children's Hospital Toy Run in Toms River scheduled for Saturday December 15<sup>th</sup>. The group will gathering at the Motor Vehicle Station on Rt 70 in Brick...just west of the Parkway at 10 AM with arrival at the hospital by 11:00. Roger has posted a list of 'most valued' gifts on the website so do some shopping and bring the unwrapped item (s) to either the Holiday Party on Nov 8<sup>th</sup> or the meeting of Nov 14<sup>th</sup>. Special thanks to Roger for his efforts in spearheading this very beneficial ride. Lunch will follow with location to be determined.

Turns out that Oct 28<sup>th</sup> kicked off the Polar Bear riding season and seven of our club riders joined in for a delightful ride through central Jersey...passing thru the Pinelands, Green Bank, Dennisville, East Dennis (okay enough Dennis). Skip did a nice job leading the ride without his trusty GPS and selected an equally delightful restaurant for lunch. These rides are fun events...watch the newsletter and website and join in.

I'll be in Florida for the month of November and VP Jerry will lead the meeting on Nov 14<sup>th</sup> which will highlight the election for new officers. Although the nomination committee has offered a slate for '08...additional nominations from the floor are welcome. Please attend this meeting, speak your piece and vote.

Finally, the mileage contest is nearing an end so watch the website for instructions on getting your mileage numbers to Roger Trendowski as of November 30th. His email address is [rtrendowski@att.net](mailto:rtrendowski@att.net). Please remember to score each motorcycle separately.

**Dues are due on Nov 1<sup>st</sup>**....still \$20...best deal in town! Send your check to Carl at address above or bring cash/check to the meeting of Nov 14<sup>th</sup>. Ride often, ride safe and I'll see you at the Holiday Party on December 8th. *Cheers, Tom*

[harleebetom@yahoo.com](mailto:harleebetom@yahoo.com)

## **2008 Elections – November meeting!**

2008 elections will be held at our November meeting. You must have paid your 2008 dues to vote. Our nominating committee has nominated:

- Jerry (Captain Nautilus) Rouvrais for President
- Joe Karol for Vice President
- Art Goldberg for Secty/Treasurer

Nominations will also be accepted from the floor. Please come out and VOTE to support our officer slate for 2008!

## **Eighth Annual Gathering of the NJ BMW Clubs AKA Max's Rumble – October 14<sup>th</sup>**

Skip Palmer



Thanks to everyone's extraordinary efforts, our "Rumble" was a smashing success. Dennis, Grant, Art, John Dunn, Joe Karol, Dan, and Jerry worked on Saturday afternoon to set-up and plan the final details. Then, early Sunday morning they returned with the final

delivery of ice and food, started the grills, and the Field Event area was set up. Their attention to details ensured everything was ready for "Rumble".

Pete Stone and George Hickman arrived Sunday morning bearing food and gourmet specialties that simply put the event over the top! Both worked all afternoon to guarantee that everyone had a feast to remember. Thank you for making sure everyone's day was spectacular.



The Skylands Riders met Roger and me with an overwhelming force in Holmdel at 10 AM. We tried our best to show them the diversity and beauty of northeastern Monmouth County. Several unexpected detours and the size of the group forced us to amend and shorten the ride to meet our arrival deadline.

Grant and his specially trained team set up a four event challenge of riding skills that kept the group so entertained that many stayed well past their planned departure. Our own Dave Mason came through by winning two events, which saved the Shore Riders from too much embarrassment. Adding to everyone's amusement, the water balloon launcher worked for the first time (at least in my memory)

Eric Shur and Sue Quitau e-mailed me to express their thanks for a day that will set a new bench-mark in bringing the three clubs together for shared friendships, food, and fun! Eric wanted to have Pete's e-mail to personally

thank him, but I think he really wants to recruit Pete into the Skylands club.

Bill Mack called to express his personal thanks and the Skylands Riders heartfelt gratitude for a great day.

Thanks to Bill and Les for sharing their photos for this article.



**A Legend in her own Time..**

According to Bill Mack's photos of the group gathered together, there were the following members from each club: New Sweden 17, Shore 27, and Skylands 25.



That fact being stated, it is important to note that the count included several people which are members of more than one club; some choose to vote for each club and others aligned with their "home turf" club.

Obviously, totals were adjusted for some members holding up two hands. The two Skylands members on the hill taking the photo were included in the total tally.



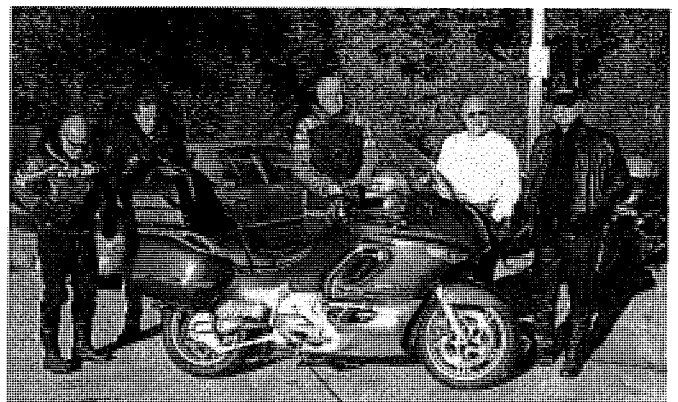
As a disclaimer, the count does not include some members of the Skylands club who arrived at the rumble, but left before the photo was taken. Therefore, no count can be truly accurate. In my opinion, the winners were decidedly the riders, friends, and family that came out to renew friendships, share a great day, as well as an exceptional meal. Max Monaco would have had one hell of a good time and with a huge grin he would have rearranged the numbers to his liking! Bless you Max! You are not forgotten!

## **First Polar Bear, October 28<sup>th</sup>**

*RD Swanson himself*

When I left the house at 8:40 it was 50 degrees and when I returned at 3:40 it was 59 degrees. There were few clouds. There was some wind, but all in all it was an almost perfect riding day.

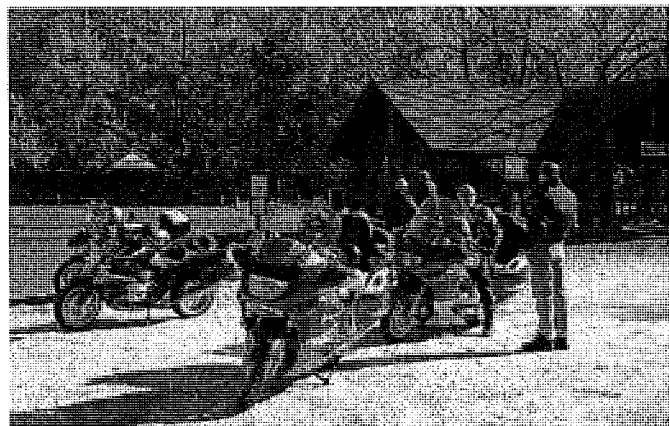
When I rode into "Our Wawa" Skip and Capt. Don were there to greet me. Tom Rizzo, John Dunn, Steve and Tom Spader soon followed. Kickstands were up at 9:45 and we were off through central and south Jersey, It's been said before, but will be said again. Jersey is an amazing state. There are still areas of open space, pine forests, little towns, vast marshes and lightly-travelled roads. We saw them all.



After numerous stops for emptying bladders and kicking tires we pulled into the VFW at Cape May where the event is held.



We didn't stay long because we were hungry but did see Pete Stone ride by and saw Karl Kretchmer as we left. Karl is an inspiration!



**Bladder Break in the Pines**

We had a great lunch at Barnacle Bills right on the Delaware Bay. The clam chowder was excellent and everything else was pretty good. Bill Dudley and his son Willy joined us. (Tom and John had departed earlier.)



**Lunch on the Bayside**

Skip led the group back on pretty much the same roads and I opted to take the GSP. It's sort of a challenge that I enjoy, i.e. sorting through the gaggles that gather on this mostly two lane highway. I called Don to see how their ride went and he said it was just fine. They only saw a few bambis.

## **November 3<sup>rd</sup> – Pumpkin' Run Ride**

*Roger Trendowski*

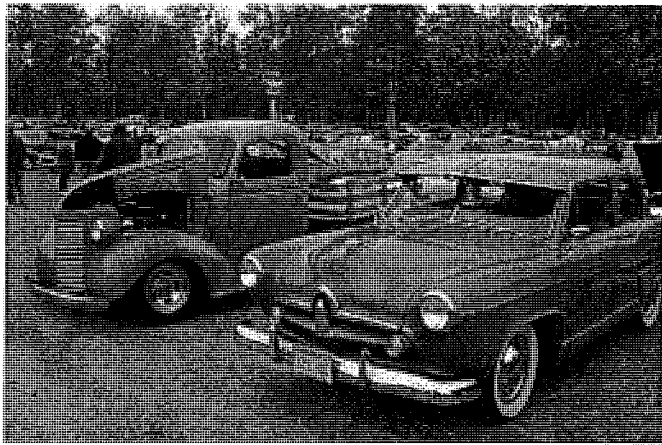
Our kickoff point was the "inexpensive & good" Breakfast Club restaurant in Farmingdale.

Skip Palmer, John Dunn, Grant Duncan and I departed for a straight run down the GSP at 8AM as planned. Encountering no rain and barely any wind, we arrived at Pumpkin Run car show at about 9:45.

In its twelfth year, the show is in Egg Harbor Township on Zion Road (about 20 miles south west of Alt. City.) I'm sure you'll hear and see much more about this great event at our November 14<sup>th</sup> club meeting, but let me summarize it for you.... It's billed as a "street rod show and antique, engine and tractor show" held at Flemmings Auto Parts. They anticipated 400 show cars and hosted an auto- parts related flea market... all held in an old auto junk yard.



The grounds were all cleaned up, woodchips covering the sandy soil, and selected old/very old wrecked cars arranged in an artistic way along the hedge rows of trees.



Junk, collector cars, hit-and-miss engines, fire trucks, tractors, boat motors and old signs were spread throughout the treed and open space areas.



There had to be 50-100 acres in which to wander about; and that's what our gang did for 2 ½ hours. They expected 10,000 visitors at this one-day event.



When we were ready to leave at 12:15pm, we collectively made the decision to head for the Delaware Memorial Bridge instead of the Cape May-Lewes Ferry for fear of heavy ocean waves due to the east coast storm. Traveling mostly on route 40, northwest, we stopped for a short lunch break at Richman's

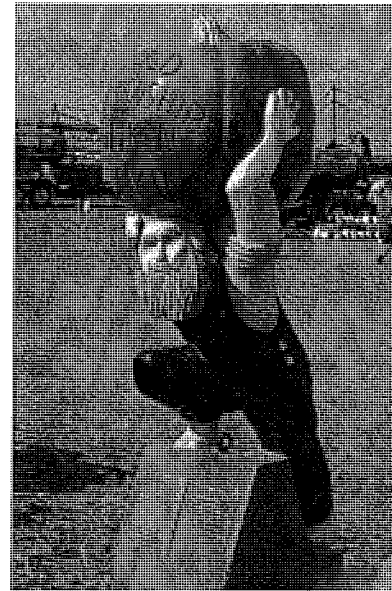
Restaurant (Rt 40 in Woodstown, NJ) that Grant knew well (one of Nancy's favorite places). Great Angus burgers and milkshakes in a homey-family style setting.

Eventually, we made it over the Delaware Memorial Bridge, a short leg on I95 and then south on Route 1 toward Lewes, DE. I think we passed Lewes about 4pm as we continued down Rt. 1 until meeting the Atlantic in the Dewey Beach area. Following Rt. 1 along the beach on the peninsulas/islands we made it the last 30 miles or so to Ocean City MD. About 1 mile inland on Rt. 50 was our overnight accommodations: Comfort Suites. It was a great place, clean and very reasonable. Most importantly, it included an excellent continental breakfast with eggs, waffles, sausage, fruit, and all the trimmings. (...Nothing like adding 5 pounds of lead to your gas tank before starting out on a full day's ride.)

After breakfast, Skip and Grant decided to head south to Kiptopeke VA to the wildlife sanitary. John and I took off Northwest to Pumpkin Chunkin. (See the separate story on Pumpkin Chunkin). We all met again for lunch at 12:30pm at the Dog Fish Brewery in Rehoboth Beach. After some great food, we traveled north, retracing our oil slick from the previous day... north on Rt. 1 to I95/295 to NJ Turnpike and home. From my house in Middletown, I logged GPS 536 miles with a moving average of 49 mph which is not bad considering the secondary southern NJ and Delaware coastal roads we traveled.

## **Pumkin Chunkin - Continued**

*Roger Trendowski*

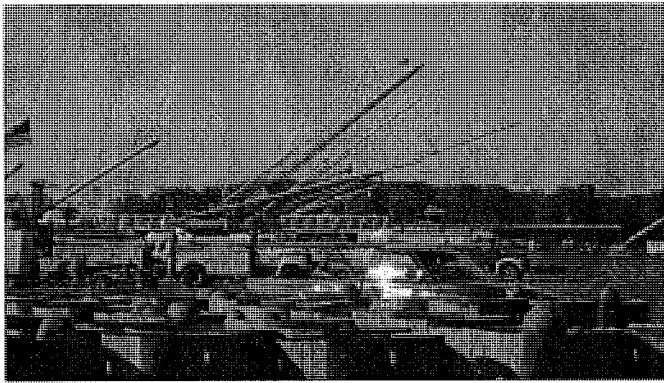


This well known 3-day event has participants from all of the country who compete for throwing a pumpkin the farthest. "Pumkin Chunkin" (not pumpkin chunkin) is in its 22nd year <http://www.punkinchunkin.com/>. It may sound simple but the innovations developed by the contestants are really complex. There were

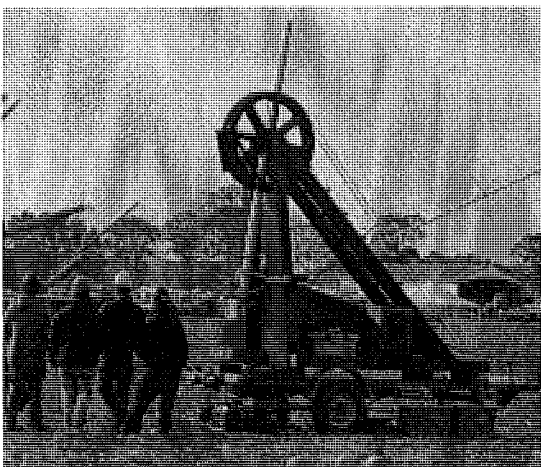
approximately 150 contestants this year and that is the reason they move the event to a larger field.

The most powerful devices, air cannons, were located at the end of the longest part of the field. Then in a half moon sweep across the field, there were located lower tech devices such as catapults (operated by springs, weight, and un-describable other ways). I didn't see the infamous lady who uses her bra to throw a pumpkin; maybe next year.

John Dunn and I arrived in the immediate area but were somewhat confused by the large construction signs on main roads pointing the way, but emptying us onto back roads with no additional signage. After speaking to one of the officials, we understood why. Apparently, most of the 200 wire push-in signs that were placed around the area to insure travelers would be directed to the event... were stolen. The signs displayed "Pumpkin Chunkin" and I guess collectors felt they needed them more than visitors.



The corn field parking area was huge. Luckily we arrived early at 9am and were able to park only a few hundred feet to the entrance. As we parked our bikes, Dave Mason drove up beside us. He had stayed overnight in Lewes. A cute teenage girl taking money at the entrance told John and I "that will be \$7 for event and \$1 for parking." She didn't know what to say when John responded "I don't want to park."



As we walked into the event area, it was apparent that competition had already started. At the far end of the

field, possibly 1/4 mile from the nearest catapult were we were located, a huge crowd was gathered. They were yelling with excitement as the announcer said "fire in the hole" and counted down 3-2-1 fire. Some of the launching devices sent the 8 pound pumpkin thousands of feet, some went hundreds, and some a mere 50. In one instance the announcer yelled "pumpkin pie" which meant that the pumpkin disintegrated upon launch and most likely sprayed everyone standing behind the device. Several kids on 4-wheelers converged on the spot where the pumpkin hits and then officials used a laser rangefinder to measure the distance.



**Second Amendment**

John and I met one of the 14 team members of "Second Amendment" – "the baddest pumpkin gun on the planet!" <http://www.secondamendmentgun.us/>

They came from Michigan to compete in Pumpkin Chunkin and it has paid off. They finished as World Champions in 2002, 2003, 2005 and 2006. Their compressed air powered cannon is pretty complex: fabricated in 1999, made of steel and aluminum, programmable electronic controls, hydraulic target positioning, two stage firing, breech loaded, weight 28,000 lbs., barrel length is 100 feet with a 210 mm bore. As ammo, they boast: pumpkins, melons, bowling balls, frozen turkeys, and more.

Second Amendment's record shoot was in 2003 for 4438.28 feet. They've shot further but lost the pumpkin in the woods so it wasn't counted. In front of their

cannon, the team has set a statue of a farmer holding a pumpkin on his shoulders.

Pumpkin Chunking has evolved over the years into a carnival type of event. There were dozens of food vendors, kiddy rides, and vendors selling: flags, welded steal toys, garden equipment, tee shirts, hats, etc. John and I left at 12 Noon to meet Skip and Grant for lunch. We couldn't believe the crowd of people still coming arriving and walking a half mile across the corn field parking and down a blocked off highway, to the entrance gate. Someone said that they expected 50,000 spectators over three days.

## Upcoming Rides and Events

The following rides and events are sponsored by the AMA or other organizations and are not NJSBMWR's sponsored. Please feel free to personally arrange rides with your friends and attend.

- Nov. 3<sup>rd</sup> ~ "Pumpkin Run" Car Show and Ride to Ocean City, MD
- Nov. 4<sup>th</sup> ~ The First Sunday Gathering at Ephrata, PA
- Nov. 4<sup>th</sup> ~ AMA Polar Bear Ride to Lewes, DE
- Nov, 4<sup>th</sup> ~ Ride to "Pumpkin Chunkin" in Bridgeville, DE
- Nov. 5<sup>th</sup> ~ 7 PM Skylands BMR Riders Monthly Meeting ~ The Warrenside Tavern, Rt. #173, Bloomsbury, NJ
- Nov. 9<sup>th</sup>-11<sup>th</sup> ~ Easton Waterfowl Festival, Easton, MD
- Nov. 11<sup>th</sup> ~ AMA Polar Bear Ride to Knights of Columbus, Oldbridge, NJ
- Nov. 14<sup>th</sup> ~ 7 PM Shore BMW Riders Monthly Meeting at Schneider's Restaurant, Main St. Avon NJ
- Nov. 18<sup>th</sup> ~ AMA Polar Bear Ride to Cornucopia Restaurant, Port Jervis, NY
- Nov. 25<sup>th</sup> ~ AMA Polar Bear Ride to Hillbilly's Restaurant, Hopewell, NJ
- Nov. 28<sup>th</sup> ~ 7 PM New Sweden BMW Riders Monthly Meeting at Casa Carrolla, Rt. #73, Marlton, NJ
- Dec. 2<sup>nd</sup> ~ The First Sunday Gathering at Ephrata, PA
- Dec. 2<sup>nd</sup> ~ AMA Polar Bear Ride to Montgomeryville Cycle, Montgomeryville, PA
- Dec. 3<sup>rd</sup> ~ 7 PM Skylands BMR Riders Monthly Meeting ~ The Warrenside Tavern, Rt. #173, Bloomsbury, NJ
- Dec. 8<sup>th</sup> ~ 6 PM Shore BMW riders Holiday Party Ferrell's Stout & Steak House, Point Pleasant, NJ
- Dec. 9<sup>th</sup> ~ AMA Polar Bear Ride to Schock's Harley Davidson, Snyder'sville, PA
- Dec. 12<sup>th</sup> ~ 7 PM Shore BMW Riders Monthly Meeting at Schneider's Restaurant, Main St. Avon NJ
- Dec. 15<sup>th</sup> ~ 10 AM Shore BMW Riders Holiday Gift Ride to Toms River Specialized Hospital, Stevens Rd, Lakewood, NJ

## Upcoming – Holiday Party 2007

Tom Spader

Please mark your calendar for Saturday Dec 8th at 6 PM...and the annual Holiday Party.

This year we'll venture to Point Pleasant Beach and Farrell's Stout & Steak House. This Irish oriented pub will provide a premium dinner buffet in a private room and offer entertainment afterwards in their main lounge/restaurant to top off the evening.

There is a form in THIS newsletter – please fill it out and mail it to Carl Cangelosi or bring it to the November meeting with a check made out to NJSBMWR..

President Tom

## DUES ARE DUE!

Our 2008 dues are due THIS month. Please fill out the form in this newsletter and send it to Carl, or bring it with a check to the November meeting.

If you were one of the club members who pre-paid for the Last Chance Rally – fill out the form, and make a note on it "Last Chance Attendee" – so you are credited for the \$20 pre-registration bonus the club voted on.

## For Sale

**1998 R1100RT** - 33k, never down, Corbin seats/back rest, top box, air horn, tank bag, bar back/risers, heated grips, decent rubber, new battery, always serviced, Airoflow screen. Runs great, no surging, nice ride and in nice condition. \$6k Tom Spader 732-295-2603

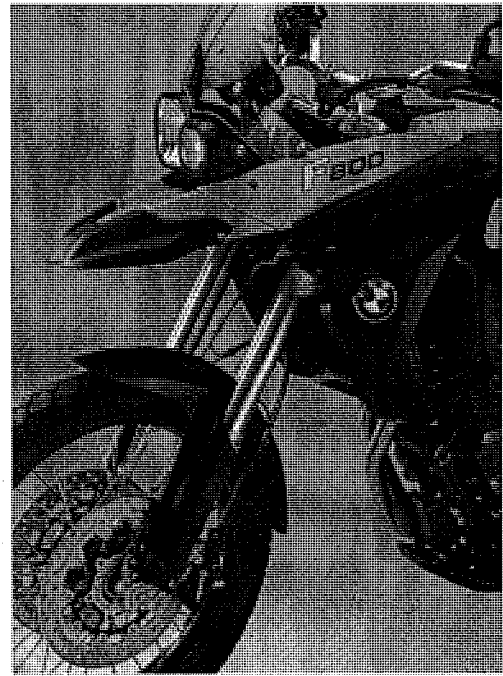
**K1200S Tankbag.** Excellent condition; **R1200GS Tankbag,** Good Condition; **Inner liners, BMW hard cases.** Make Offers: [rds112@verizon.net](mailto:rds112@verizon.net).

## Found on the Web

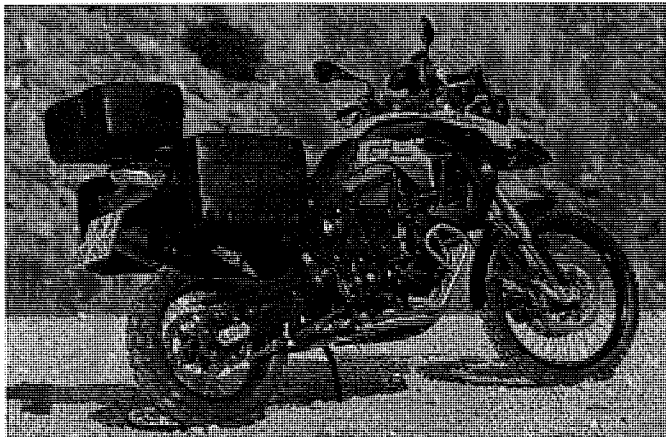
Glenn Martin



It's real - F800GS



### **Tasteless Filler**



**Pot at the end of the rainbow finally found..**

What club member is going to be first? I've heard rumors that a certain soon to be club President is in the market for a new GS..

### **2008 Holiday Party, Saturday December 8<sup>th</sup>, 6PM**

**Members and ONE guest are \$20/each. Additional guests will be \$30/each.**

I will be attending the 2008 Holiday Party, and will be bringing \_\_\_\_\_ people with me.

I've enclosed the total of \$ \_\_\_\_\_

Member name: \_\_\_\_\_

Member phone number: \_\_\_\_\_

Member's suggestion for a Solid Gold Award for 2007: \_\_\_\_\_

**Please mail this to Carl Cangelosi, 20 Beechtree Lane, Plainsboro, NJ 08538,  
or bring to our November meeting!**

# NEW JERSEY SHORE BMW RIDERS INC.

## Membership/Renewal Application

Name: \_\_\_\_\_

Address: \_\_\_\_\_

City: \_\_\_\_\_ ST: \_\_\_\_\_ ZIP: \_\_\_\_\_

Significant Other's Name: \_\_\_\_\_

Home Phone: (\_\_\_\_) \_\_\_\_\_ Cell Phone: (\_\_\_\_) \_\_\_\_\_

BMW-MOA Member? Yes  No  Membership Number: \_\_\_\_\_

BMW-RA Member? Yes  No  Membership Number: \_\_\_\_\_

Our club runs a private mailing list – only open to members – on Yahoo. It is used to arrange spontaneous and planned rides, announce club events, and remind you of meetings and any other club functions. The list is not used for idle chat and you can select to receive no email from the list with the exception of administrative email (which is infrequent). You can also select to get the email as single messages (recommended since the volume of mail is very low) or in a daily digest. In order to be a member of this list you must REQUEST to be on it – and have a good Email address.

I would like to be on the Yahoo email list: Yes  No

The email address I'd like to use is: \_\_\_\_\_

I'm interested in:  Overnight Rally's  Long Distance Touring  Tech Sessions  Day Rides

Other \_\_\_\_\_  
(Select as many as you want)

By signing this application, you accept full responsibility for any injuries you or any guests may incur during a NJS-BMW-Riders Inc. club activity. You accept that motorcycling is inherently dangerous, and that the club officers and members are not expected to accept any liability for injuries suffered by you or any guest you invite to an activity.

I've read the above paragraph and agree to hold harmless all members and officers of NJS-BMW-Riders Inc.

Date: \_\_\_\_\_ Signed: \_\_\_\_\_

Please forward this application with a check for \$20 made out to NJ Shore BMW Riders Inc. to (dues may be pro-rated, they are due on November 1st of each year, ie, after June 1<sup>st</sup>, dues are \$12, after September 1<sup>st</sup>, dues are \$6):

I attended the 2007 Last Chance Rally and pre-registered. Please credit my pre-registration bonus towards my 2008 dues!

### MAIL TO:

NJSBMWR  
c/o Carl Cangelosi  
20 Beechtree Lane  
Plainsboro, NJ 08536

New Jersey Shore BMW Riders

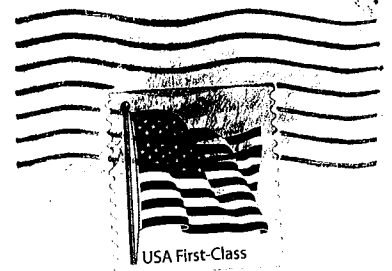
c/o Carl Cangelosi

20 Beechtree Lane

Plainsboro, NJ 08536

(Postmaster: Address Service Requested!)

TO:



*Dues OK until 11/01/2007*

**Don Eilenberger**

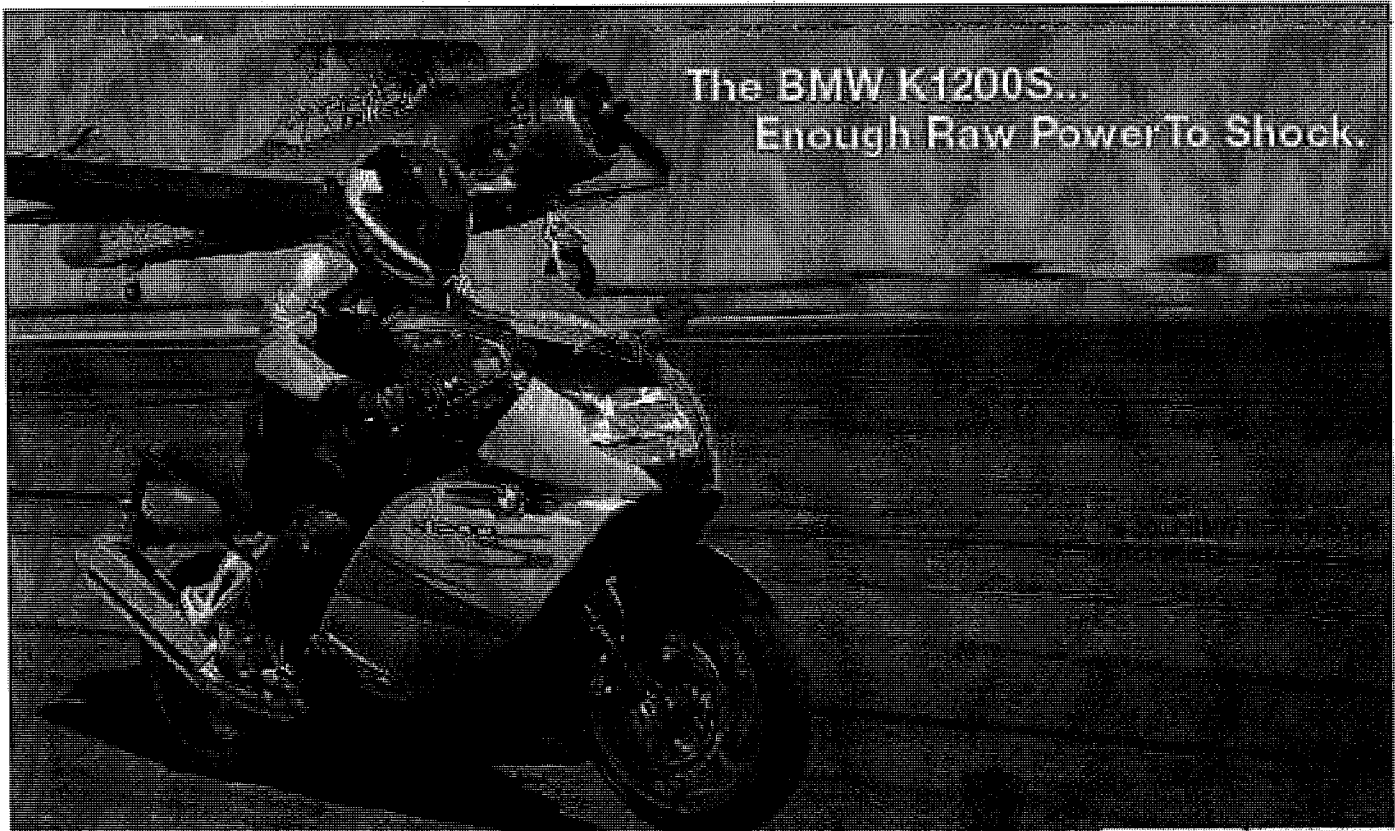
1213 Pond Rd

Spring Lk Hts NJ 07762-1962

**Club Meeting – November 14<sup>th</sup> – 7PM**

**Schneider's German-American Restaurant, Rt 71, Avon**

07762+1962-13 0006

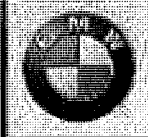


The BMW K1200S...  
Enough Raw Power To Shock.

**Di Simone Motorsport**

1210 Route 73 S • Mount Laurel, NJ 08054  
856.846.1500 • [www.di-simone-motorsport.com](http://www.di-simone-motorsport.com)

BMW Motorrad  
USA  
Authorized  
Dealer



BMW is the only manufacturer of motorcycles in the world that has a 100% ownership stake in the BMW Group. BMW is a registered trademark of BMW Group. © 2007 BMW Group of North America, LLC. All rights reserved. BMW, the BMW logo, and the BMW roundel are registered trademarks of BMW Group of North America, LLC. All rights reserved.